

A Neighborhood School

Stephenson is fortunate to receive generous support from a number of neighborhood businesses, residents, grandparents and alumni. These partners include:

- Arnold Creek Neighborhood Association
- Junior Achievement
- Oregon Partnership
- Stephenson Children's Care Association
- Stephenson Foundation
- Stephenson PTA

Welcome to Stephenson Elementary School



All parents seek the best for their children. The Stephenson family pursues this ideal with passion, persistence and planning. Our community takes pride in achieving the following:

A neighborhood school

Small classes

An engaging, challenging curriculum

Art - Music - Technology - Physical Education - Spanish Instruction

A safe, nurturing environment

Highly qualified teachers

"We have found Stephenson to be a safe and nurturing environment where our daughter Mia is noticed, appreciated and encouraged to reach her fullest potential. The arts are very important to us and we are pleased with Stephenson's ample music opportunities as well as the integration of art into the curriculum. Being part of Stephenson has connected us to our neighborhood community in a way we never experienced while Mia was attending private school." Kristin and Mark Cywinski

"Three of our children have gone to Stephenson, including one now in high school. Our kids each have different temperaments and learning styles, yet the teachers have appreciated their unique personalities. Most importantly, the instruction at Stephenson isn't just about testing; teachers create an environment for kids to succeed academically as well as socially, instilling in them a love of learning." Karin and Jim Chesnutt



For an appointment to visit the school and classrooms, to receive more information about enrollment or to become a neighborhood volunteer, please contact:

Beth Shelby, Principal
bshelby@pps.k12.or.us

Liz Morgan, School Secretary
Lmorgan1@pps.k12.or.us

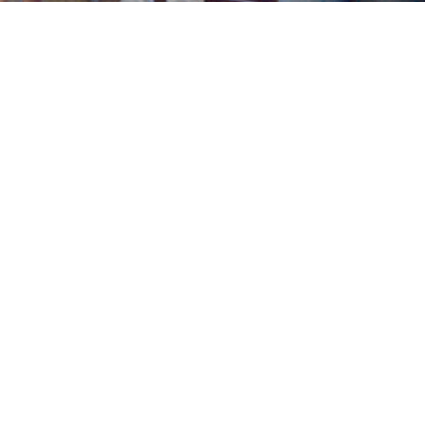
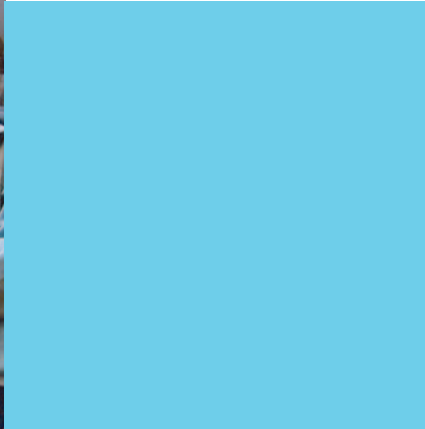
Stephenson Elementary School
2627 SW Stephenson Street
Portland, OR 97219
503-916-6318 (phone) 503-916-2675 (fax)
www.stephenson.pps.k12.or.us

Portland Public Schools is an equal opportunity educator and employer

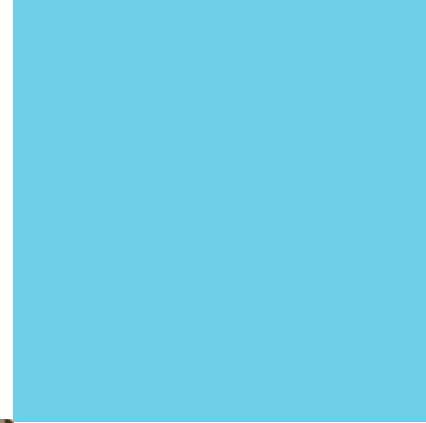
Strive Shine Succeed

A Rigorous Program Sets High Expectations

Nestled in a quiet Southwest Portland community between Lake Oswego and Tryon Creek State Park, Stephenson Elementary School offers neighborhood families a rich K-5 educational experience. Dedicated to serving the whole child, we expand a rigorous academic environment with music, art, technology and Spanish. Our dedicated staff - - with more than 225 years of combined teaching experience - seeks to bring out the best in all our students. Using individualized learning strategies, our educators equip students with the skills to succeed academically as well as to participate in a global community.



Stephenson has a recognized tradition of community involvement. Volunteers contribute thousands of hours each year to provide our students with opportunities to explore and achieve at all ages and learning abilities.



...Including Art, Music, Spanish and Technology

A place to learn should always include a place to run. Stephenson's nine-acre site provides ample green space so healthy bodies can propel healthy minds. The campus includes a new state-of-the-art play structure, soccer field, baseball diamond, basketball courts, dodge-ball field and for wet-weather activities, a large covered play area. Portland Parks & Recreation coordinates soccer and Little League programs on the campus that serve neighborhood families.



When not in use by students during school hours, neighborhood residents are welcome to use the play structure, paved walking path and grass fields, or to relax in the student's garden area.

Stephenson At A Glance:

- Stephenson's academic program is rated "exceptional" and all of our teachers are rated "highly qualified" by the Oregon Department of Education.
- On-site, before and after-school child care is provided through the Stephenson Children's Care Association.
- Half-day and full-day Kindergarten have small classes to allow for individualized instruction. On-site preschool is also available.
- Orff-Schulwerk music curriculum is taught to grades K - 5. Upper grades receive instruction in strings, band and choir. Artist-in-Residence and Art Literacy serves all grades, while 3rd, 4th and 5th grades rotate each year performing in their own musical production.
- Spanish is taught to all students as is Technology; including keyboarding, internet use, word processing and composition in a literacy-based approach.
- Individualized support is provided to students who are struggling readers (Reading Friends) as well as for those requiring more challenging programs (Special Education and Talented and Gifted).
- Our Librarian provides reading support school-wide, as well as designing grade-level programs and giving individual assistance.
- Students have leadership and mentoring opportunities that include "buddies classes", lunch servers, crossing guards and community service projects.

Thanks to the support of our community partners, especially our Stephenson Foundation and PTA, students have opportunities to participate in a wide variety of activities and interests outside the classroom that enhance their educational experience.

These include:

- **Missoula Children's Theater**, Fall and spring student performances directed by this highly-regarded theater group;
- May's **Multicultural Celebration**, a school-wide festival celebrating cultural diversity involves Stephenson families, relatives, Portland State University international students and friends;
- **After School Academy**, offering enrichment classes in art, science, theater, voice, music, chess and more;
- **Camp Collins**, a Spring overnight adventure for fifth graders involving team-building and athletic activities;
- **Katoh School of Japan**, Stephenson families host a group of exchange students who participate in classroom and community activities;
- **Boy Scouts, Girl Scouts, Destination Imagination, Portland Youth Soccer Association and Mt. Sylvania Little League.**