

Rieke Elementary School

Parent and Student Handbook & Calendar



2010-11

Table of Contents

LETTER FROM THE PRINCIPAL	1	VISUAL AND PERFORMING ARTS	8
SCHOOL HOURS	2	PHYSICAL EDUCATION (PE)	8
LATE OPENINGS - 3RD WEDNESDAYS	2	MEDIA CENTER	8
GRADING PERIODS	2	TECHNOLOGY	8
BUS SCHEDULES & INFORMATION	2	TALENTED AND GIFTED PROGRAM	8
PARENT/TEACHER CONFERENCES	3	CHILD CARE	8
ACCIDENT AND ILLNESS	3	PERSONAL PROPERTY	9
SCHOOL MEALS	3	SAFETY PATROL	9
INCLEMENT WEATHER	4	HOMEWORK POLICY AND EXPECTATIONS	9
SCHOOL VISITATIONS	4	HOW CAN PARENTS HELP?	10
CONTACTING YOUR YOUNGSTER'S TEACHER	4	LOST AND FOUND	11
USE OF TELEPHONE	4	COMMITTEES AND ORGANIZATIONS	11
FIELD TRIPS	4	MARY RIEKE PARENT TEACHER ASSOCIATION (PTA)	11
DISTRICT AND STATE ASSESSMENT	5	SITE COUNCIL	12
ACTIVITIES AND EVENTS	5	THE RIEKE FOUNDATION	12
GRANDPARENTS' AND SPECIAL FRIENDS' DAY	5	VOLUNTEERS IN PORTLAND SCHOOLS	13
CURRICULUM NIGHT	5	DISTRICT RESOURCES	13
SEPTEMBER FAMILY PICNIC	5	September 2010	14
FIELD DAY	5	October 2010	15
BIRTHDAY OBSERVANCES	5	November 2010	16
SPRING FUN RUN	5	December 2010	17
SCHOOL STAFF	6	January 2011	18
SCHOOL NEWSLETTERS	7	February 2011	19
SPECIAL RESOURCES	7	March 2011	20
BUILDING SCREENING COMMITTEE (BSC)	7	April 2011	21
SCHOOL PSYCHOLOGIST	7	May 2011	22
LEARNING CENTER (LC)	7	June 2011	23
SPEECH AND LANGUAGE	7	July 2011	24
SPECIAL CLASSES	8	August 2011	25

LETTER FROM THE PRINCIPAL

DEAR FAMILIES,

On behalf of the staff of Rieke School, welcome to the 2010-11 school year! We're ready and excited to begin a rewarding and successful experience for all our students. We will continue to provide a safe, nurturing and challenging academic environment, working in partnership with families as we continually improve and maximize our effectiveness with students.

This Handbook/Calendar offers helpful information about Rieke School. Essential dates and phone numbers are also listed. As the school year continues, please visit our website at <http://www.pps.k12.or.us/schools/rieke> for current updates.

The staff at Rieke is committed to assisting all students in reaching their full potential within a joyful, stimulating learning environment. We challenge students and, at the same time, provide a school atmosphere that makes cooperation and teamwork essential to the learning process. Our goals are best met in a setting of high academic and behavioral expectations, where each child is known as an individual and the focus is on strengths and excellence. We believe each child deserves encouragement, support and a sense of well being. We want all Rieke students to feel welcome, develop and maintain a lifetime love of learning and fulfill their potential as competent citizens and caring people.

Volunteers are an important part of school life here at Rieke. Please contact your child's teacher or the PTA volunteer coordinator if you have time to contribute. The energy and enthusiasm generously donated by our many volunteers is a tremendous advantage for our students.

Our school newsletter, the "Rieke Rapper" is sent home with the youngest child in the family on Mondays. We also send the Rapper home electronically via email- just contact the school office to be placed on our email list. Please get into the habit of reading the Rapper regularly. We rely on it to communicate important and timely information to you. If you have unanswered questions, or a concern, please give us a call or email. We want to hear from you! Children thrive in an atmosphere where there is clear communication and support between families and school.

I am looking forward to an exciting and fulfilling school year for all of us. It's an honor and delight to work with such an outstanding group of children, families and staff. Thanks for your support!

Sincerely,

Andrea Porter

Principal

SCHOOL HOURS

Grades	Opening	Tardy	Dismissal
Kindergarten AM	8:35 a.m.	8:45 a.m.	11:20 a.m.
Grades Full K,1,2,3,4,5	8:35 a.m.	8:45 a.m.	3:00 p.m.

School begins promptly at 8:45 a.m. Please have your child in the classroom and ready to learn by that time.

Students and parents are asked to wait outside until the doors are opened. During inclement weather, they may wait in the front hallway. Please do not leave children unattended before and after school hours because there is no supervision. We appreciate your cooperation to provide a safe environment for our students. Parents who need to take their child from school during school hours must check them out through the school office. This procedure is to ensure the safety of students.

LATE OPENINGS - 3RD WEDNESDAYS

This year, all PPS schools will open two hours late on the 3rd Wednesday of the month (except November) to allow time for staff professional development. These late openings replace the full day professional development days we've had in the past and allow time for teachers to learn, share, and plan together for continual school improvement. Rieke will open at 10:35 and begin school at 10:45 on the following dates:

September 22
October 13
December 8
January 12
February 9
March 9
April 13
May 11

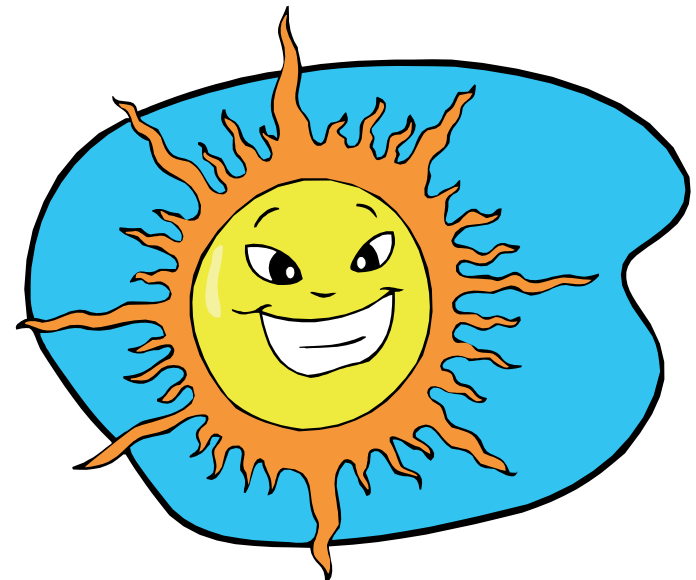
GRADING PERIODS

1st TrimesterSeptember 7 – December 2, 2010
2nd Trimester.....December 3, 2010 – March 17, 2011
3rd TrimesterMarch 28 – June 14, 2011

BUS SCHEDULES & INFORMATION

2010-11 bus schedules are available in the school office.

In case of a particular problem at a bus stop, please call the Transportation Department at 503-916-6901 for information. They will, in turn, call Rieke.



PARENT/TEACHER CONFERENCES

Parent/Teacher Conferences will be held on Monday, November 22nd & Tuesday November 23rd. There will be no school on Monday, November 22, Tuesday, November 23 or Wednesday, November 24. Please plan to attend your child's conference so that the home-school partnership is strengthened. This is an extremely helpful interaction that assists teachers in getting to know their students.

ACCIDENT AND ILLNESS

Only first aid care may be given at school. In case of serious accident or illness, we will:

1. Contact parent(s) or legal guardian,
2. Contact the given emergency number(s),
3. Take child to the hospital (if emergencies arise).

Please let us know as soon as possible if there is any change in your home, work, or emergency numbers. It is important that the school has accurate records for illnesses and emergencies. Medicine can only be given to students who have provided the school with permission forms signed by a physician and a parent. (These forms may be obtained from the school office.)

SCHOOL MEALS

Portland Public Schools provides students healthy and balanced meals at the following prices:

Lunch Full Price – \$2.30 Reduced – 40¢
(includes milk) (includes milk)

Milk Only 50¢

Rieke participates in a computerized lunch ticket system. Families pay for lunches in advance and children withdraw from their account whenever they buy a lunch. Please leave a clearly identified check or cash for your child's lunches in the cafeteria mailbox in the school office. PLEASE, do not let your child's account run out of funds; it creates uncomfortable delays in the lunchtime.

Students may qualify for free or reduced priced meals depending on parent's income or status (Food Stamps or Aid to Dependent Children recipients, Foster Child Care provider, etc.). We urge you to complete a meal application form if you think you may qualify for free or reduced price meals. Please call Nutrition Services hot line at 916- 2000, Ext. 3399, for additional information.

If your lunch schedule permits, you are welcome to stop-by and have lunch with your youngster. Just call us a day before your visit so that we may advise the cafeteria.

INCLEMENT WEATHER

There are three possibilities due to bad weather. First, schools can be closed. Second, schools can be on a two-hour late opening. On late opening days, school begins at 10:45 a.m. for students. Please do not send your children to school before this time. Thirdly, early dismissal may be called. It is imperative that your child knows what to do in case of an early dismissal and that emergency record are kept current.

You may access current information regarding schedule changes on the Portland Public Schools website: www.pps.k12.or.us.

The following radio/TV stations also carry PPS schedule change information:

- FM – KBPS 89.9; KGON 92.3; KXL 95.5; KISN 97.1; KUPL 98.5; KWJJ 99.5; KKRZ 100.3; KINK 101.9; KKCW 103.3; KXYQ 105.1; KMJK 106.7
- AM – KGW 620; KXL 750; KWJJ 1080; KEX 1190; KUPL 1330; KBPS 1450; KMJK 1550; KFXX 1520
- TV – KATU TV - Channel 2; KOIN TV - Channel 6; KGW TV - Channel 8

We ask that you please avoid calling the school during inclement weather so that our phone lines are free to receive closure information.

SCHOOL VISITATIONS

Parents are welcome to visit our school! It is important that you sign in at the office upon arrival so that we know you are in the building. We appreciate your cooperation with this request.

CONTACTING YOUR YOUNGSTER’S TEACHER

If you wish to talk to the teacher about your child’s work or any other concern, please contact the teacher to arrange a convenient time that will not take away from instruction and allow ample time for discussion. Teachers have many responsibilities (sometimes immediately after dismissal time). An appointment may save you an extra trip.

USE OF TELEPHONE

The school telephone is a business telephone for the school. Except in cases of emergency, we hesitate to call students or teachers from the classroom to talk on the telephone. The office will be glad to relay important messages. However, we ask that parents avoid calling the school on a regular basis to communicate messages regarding babysitting or supervision changes unless an emergency exists. Students will only be allowed to use the phone for urgent calls. If necessary, these messages should reach the office by 2:30 p.m., well before our 3:00 p.m. dismissal time. Thanks!

FIELD TRIPS

A permission slip will be sent home for each school sponsored field trip. We must have a signed permission slip by a parent/ guardian to allow a child to leave school. We cannot accept handwritten notes or phone calls in place of the field trip form.

DISTRICT AND STATE ASSESSMENT

The Oregon Statewide Assessment (Grades 3, 4 and 5) was created to measure student achievement based on the curriculum taught in Oregon schools. Students are tested to help determine how well they are progressing toward grade level benchmarks. The tests also help evaluate the success of instructional programs. Testing occurs at various times throughout the year.

ACTIVITIES AND EVENTS

GRANDPARENTS' AND SPECIAL FRIENDS' DAY

Rieke students are encouraged to invite their grandparents or an adult special friend to visit school on Friday, October 23. This experience is positive for all parties involved since students enjoy sharing what they do in school and Grandparents/Special Friends are interested in school activities. We look forward to this day!

CURRICULUM NIGHT

Rieke offers Curriculum Night in the fall so that parents/guardians have the opportunity to learn about classroom programs. Homeroom teachers provide overviews of their goals and activities for the year. Support staff is also available to answer questions and give insights into their programs. This event is for adults only. This year Curriculum Night is on Tuesday, September 28, 2010.

SEPTEMBER FAMILY PICNIC

A truly unique Rieke tradition! The entire school community gathers on our playground to celebrate the start of school. PTA sponsors this fun event. This year it will be on Tuesday, September 14th.

FIELD DAY

Field Day is held during the last two weeks of school. This event includes a variety of fun activities that promote physical fitness and cooperation.

BIRTHDAY OBSERVANCES

Arrangements for celebrating special occasions are made with the classroom teacher in advance. All food items must be prepared and wrapped in a licensed commercial kitchen. Please consider bringing treats other than food items such as pencils, stickers, or a book for the class. When food is brought to school, we encourage healthy choices to accommodate a variety of dietary needs. We ask that private party invitations not be distributed at school.

SPRING FUN RUN

Each spring students and staff participate in a spring jog-a-thon to raise money for arts and/or other instructional opportunities. Last year, the Rieke "rat race" (run for arts and technology) rose over \$16,000! These funds are used to advance use of technology at Rieke, as well as to provide enriching experiences in visual arts, dance, sculpture and performance.

SCHOOL STAFF

ADMINISTRATION AND OFFICE STAFF

Andrea Porter..... Principal
 Rachell Spink..... Principal's Secretary
 Liz Loughney..... School Secretary

TEACHING STAFF

Grade Level	Name.....	Room #
Kindergarten	Julianne Reddekopp.....	7
Kindergarten	Laura Taiby.....	8
Kindergarten	Brad Waters.....	6
1	Alicia Baker	1
1	Julie Smith.....	12
1	Kerrie Waymire.....	11
2	Jill Rebholz.....	3
2	Stephanie Savage	10
2	Lisa Taylor	2
3	Michael Plein	22
3	Maia Foley-Weintraub.....	21
3	Carla Williamson.....	4

4	Sandy Donnelly.....	19
4	Jeff Sturges	20
5	Linda Austin.....	17
5	Rob Herder	18

Library Assistant	TBA.....	Library
PE	Margaret Earl	Gym
LC	TBA.....	5
Technology Support	TBA.....	Library
Literacy Support.....	Doreen Zemble	Office
ESL	TBA.....	5

SUPPORT STAFF

School Psychologist	Natalie Leslie	Office
Speech/Language Pathologist ..	Mary Mitchell	Office
Nurse	TBA.....	Office
Cafeteria	Daureen Morris.....	Cafeteria
Custodian	TBA	

SCHOOL NEWSLETTERS

Our school newsletter, “The Rieke Rapper” is published with support from parents each Monday and contains important and useful information for Rieke families. A copy of the Rapper newsletter will be sent home with the youngest student of each Rieke family. We will also send an electronic copy via e-mail to families who request it. Please be sure to complete the form to register your e-mail address to request an electronic copy of the Rapper. This form can be found in the opening day packet or in the school office.

SPECIAL RESOURCES

BUILDING SCREENING COMMITTEE (BSC)

The Building Screening Committee is assembled when a teacher or parent has an academic or behavioral concern about their student. The BSC is made up of school staff and the parent. The BSC collects information about the student and meets to discuss strategies and develop a plan to support the student. For example, if the issue is behavior, the BSC may ask for data and suggest ways to lower student/teacher frustration or change surroundings. For an academic concern, the team may brainstorm ideas for changing instruction methods, adapting curriculum, or changing the environment. All interventions are designed to help the student progress in the general education curriculum. If the interventions are successful, the plan continues. If the interventions and adjustments are not enough to support the student, the BSC will refer the student to the Evaluation Team. The Evaluation Team will determine whether to pursue a Special Education evaluation or refer to other sources. The parent is informed and involved throughout the screening meetings and the assessment process.

SCHOOL PSYCHOLOGIST

The school psychologist functions as the school’s primary link with the district special education services. He/she serves as a member of the Building Evaluation Screening Committee that meets regularly to determine plans of action for students with educational needs. If the student is to be assessed, it is the responsibility of the school psychologist to obtain written consent from the parent, to administer cognitive tests, to obtain adaptive behavior of classroom behavior checklists, and to obtain medical reports when necessary. In addition, he/she meets with the Special Education Team to write assessment reports, to monitor and complete due process forms, and to assist in Individualized Education Plan development. The school psychologist is assigned to Rieke one-half day per week.

LEARNING CENTER (LC)

Students who qualify for special education services in reading, social emotional skills, writing, and/or math are eligible to receive services from the LC staff. Supplemental instruction is provided to students, which is coordinated with homeroom teachers and with other support programs.

SPEECH AND LANGUAGE

Speech and language supports are provided to students who qualify for communication services such as articulation, fluency, voice or language difficulties. The speech/language pathologist diagnoses and provides intervention for those students who are eligible for service based on Oregon State eligibility criteria. This specialist is a member of the Special Education Team.

SPECIAL CLASSES

VISUAL AND PERFORMING ARTS

Opportunities for creative expression and knowledge in the arts are integral to instruction at Rieke. As the arts are integrated and infused into our curriculum, children are given experiences which build skills and appreciation for a variety of art forms.

PHYSICAL EDUCATION (PE)

PE programs emphasize fitness and developmental skills in addition to various sport and movement activities. Self-confidence is enhanced by goal setting and the progress made toward reaching these goals. A halftime PE specialist provides instruction at least twice per week.

MEDIA CENTER

The Rieke Media Center provides rich experiences for students as they locate, evaluate and synthesize information from print and electronic resources. Our half time Media Specialist assists students and teachers in the selection of literature to inspire and extend classroom instruction.

TECHNOLOGY

Come by to view our computer lab, located in Room 9. It is here that students receive whole group instruction in technology tools integrated into core content to enhance and extend learning. Students have access to classroom computers as well. Our technology support instructor assists teachers and students in their lab experiences.

TALENTED AND GIFTED PROGRAM

Our continuing goal is to provide appropriate and inspiring instruction for all students. Services for Talented and Gifted (TAG) students provide accelerated instruction at rate and level for students who meet eligibility criteria.

The Rieke School TAG Plan provides a wealth of information on instruction and services for TAG students. It is available on the TAG bulletin board in our main hallway, and individual copies are available on request. An informational meeting for parents interested in TAG identification and services will be on Wednesday, October 27, 2010 at Wilson High School.

Your child's teacher is primarily responsible for the development, implementation, and assessment of TAG services. If you have questions or would like additional information, please contact your child's teacher, our TAG Coordinator Jeff Sturges, and/or the principal.

CHILD CARE

Vermont Hills Family Life Center (503-452-8633) provides before and after school care at Rieke. After school transportation to Portland Jewish Academy (503-452-3431) childcare is also available.

PERSONAL PROPERTY

Students are encouraged not to bring personal property to school. It may be lost or stolen. Toys, dolls, headsets, etc., should remain at home. In the interest of safety, skateboards, scooters, and rollerblades are not allowed at school. Any items which could be mistaken or used as weapons, including guns or toy guns, bullet shells or knives will be confiscated and may be reported to the police. There is a strict no weapons policy in Portland Public Schools. Students will be suspended if they are found with a knife in their possession, including Swiss Army Knives and other small pocketknives.

SAFETY PATROL

Safety Patrols will be on duty at the following times: 8:35 to 8:45 a.m. and 3:00 to 3:05 p.m. The fifth graders who serve on the patrol are selected for their responsible behavior and trustworthiness. They are required to follow the rules to remain on the patrol.

HOMEWORK POLICY AND EXPECTATIONS

Homework holds a definite and meaningful place in the educational program. Homework is an extension of classroom work and reinforces the concept that education is a full-day and life-long process.

- Homework expands the curriculum by reinforcing and supplementing school learning experiences.
- Homework can help develop independent work habits, encourage responsibility, refine study skills, and provide opportunities for creativity.
- Homework assignments can serve as a means of providing a bond of common effort between parent, child, and teacher. It gives parents insights into a school's philosophy, curriculum, and objectives.

Out-of-class tasks that a student is assigned as an extension of classroom work should increase in complexity and length with the student's maturity. Homework assignments should be varied to account for individual interests, abilities, and learning styles of the students.

- Practice assignments provide opportunities to apply recent learning or to reinforce newly acquired skills.
- Preparatory homework furnishes background information for the following day's class activities.
- Extension assignments encourage individualized and imaginative pursuits of knowledge.

Homework should be related to classroom work, well defined in advance by the teachers, understood by the student, promptly assessed and returned, non-punitive in nature, and monitored by the parent or guardian. The frequency and duration of required assignments should be:



Pre-K and Kindergarten

Parents of these youngsters need to spend time each day reading with their children or engaged in other learning activities related to the child's school experience. The school should encourage parents to engage in this developmental activity.

Grades 1-2

Students at this level should ordinarily complete all basic assignments within the school day. Parents need to spend time each day on reading and writing activities with their children. When homework is appropriate, an average of 20-30 minutes of effort daily, Monday through Thursday, is considered manageable.

Grade 3

Students at this level are expected to benefit from homework. An average of 20-40 minutes of effort daily, Monday through Thursday, is considered appropriate. Third grade curriculum includes long-term assignments.

Grades 4-5

Students at this level are expected to benefit from homework. An average of 30-50 minutes of effort daily is considered appropriate. Fourth and fifth grade curriculum includes long-term assignments.

Note:

- Some teachers give weekly homework packets which allow families flexibility in scheduling homework.
- If students are motivated, we encourage them to pursue their interests.
- Individual modifications/accommodations may be made for students with IEP, section 504 plans, and TAG plans.
- Classroom teachers develop their own policies for late assignments. For excused absences, the general rule is one day make up for each day missed. For extenuating circumstances, please work with the classroom teacher to develop a plan.

HOW CAN PARENTS HELP?

- Provide time each day to work with your child, talk about school, and give assistance as needed.
- Provide a home study environment that is well lit, quiet, and comfortable. Keep study materials nearby. Some children study better with soft music or background noise, so try to accommodate your child's preferred learning style.
- Make sure your child is well rested and fed and has had time to wind down after school. Also, avoid scheduling homework right before bedtime when children may be too tired or stressed to do their best.
- Avoid doing the homework yourself. Doing homework for your child sends the message that he or she is incapable of doing the work and that perfection is the main objective. Doing homework should help children plan, manage, and complete work by their selves.
- Help your children learn to be responsible for remembering their assignments, completing their work, and returning their materials to school on time.

LOST AND FOUND

A large quantity of jackets, sweaters and other items accumulate at school. If these items are labeled, they have a good chance of being returned. Lost and found articles are kept in a closet in the hall by the gym. All items will be periodically displayed for students; parents are invited to check lost and found articles also.

COMMITTEES AND ORGANIZATIONS

MARY RIEKE PARENT TEACHER ASSOCIATION (PTA)

The Rieke PTA - a chapter of the Oregon Parent Teacher Association

Being actively involved in your child's education and school experiences is one of the most effective things you can do to help your child succeed at school academically and socially. PTA helps you do that. Our amazing parents create fun and educational activities for us to share together. PTA members plan, fundraise and advocate within our community to help ensure that students and staff have the tools and resources necessary to succeed. PTA provides substantial services to parents, teachers and students. During the 2010/11 school year, PTA is funding: a part-time technology instructor and a part-time literacy support specialist; librarian book budget; cash grants for all teachers to use as needed; assistance for children and families in need; a student directory; helpful announcements and information via email and the Rapper; and programs and events such as Chess Club, Back to School Picnic, Science Fair, and the Carnival that enhance our student's experience at Rieke. Join the Rieke PTA! Fill out the membership form (provided in the first day's Welcome Packet), or contact our Membership Coordinator Sharon Meieran (smeieran@yahoo.com)

Come to our monthly meetings! All are welcome. Most important, visit your child's classroom often and come to the many events we offer to build relationships with your child and other parents.

Have a great year! Questions? Contact the Rieke PTA Board 2010/2011.

PTA Board Members

President – Dick Hausken.....dhausken@aol.com
Vice President - Sharon Meieran smeieran@yahoo.com
Recording Secretary – Curtis Roth..... curtis_jane@msn.com
Treasurer – Wendy Lear wendy.lear@gmail.com
Volunteer Coordinator- Naomi Cohen nayjcohen@yahoo.com
Events Coordinator– Kasey Huber.....kasey-huber@agencyaspen.com
Fundraising Coordinator – Melissa Sanders melsand40@gmail.com



SITE COUNCIL

In compliance with the Oregon Educational Act for the 21st Century, the purpose of the school Site Council is to promote, increase and monitor student achievement. The duties of the council include developing a School Improvement Plan, which includes instructional initiatives and plans to support the professional growth of the school's staff. Council activities also include the development and coordination of the implementation of the education act at our school and fostering family involvement in the school.

Rieke's Site Council is composed of three teachers, three parents, and the principal. We meet the second Monday of every month at 3:15 p.m. You are welcome to attend.

Site Council Members

Nikki Dorfman (Parent) nicoledorfman@mac.net
Christina Geist (Parent) geist@teleport.com
Joe Limon (Parent) joelimonpdx@gmail.com
Maia Foley-Weintraub (Teacher) mfoleywe@pps.k12.or.us
Julie Smith (Teacher) jsmith2@pps.k12.or.us
Brad Waters (Teacher) bwaters@pps.k12.or.us
Andrea Porter (Principal) aporter@pps.k12.or.us

THE RIEKE FOUNDATION

The Mary Rieke School Foundation exists to provide financial support to Mary Rieke Elementary. It is affiliated with the Portland Schools Foundation, which is an independent, non-profit organization that plays a vital role in our community to provide funds for schools and advance initiatives that directly support teachers, schools and parent involvement. Historically, our Foundation has partially funded a classroom teacher for class size reduction. Past foundation fundraising activities include an annual auction and a direct-giving campaign; we are currently considering adding additional activities. Please mark your calendar for this year's fabulous auction to be held on Saturday, November 7th. Save the date! For information on involvement opportunities contact:

Foundation Members

Laura Reunert..... 503-892-2553 reunert@comcast.com
Jean Hinkley 503-246-3113 jean@grand-benedicts.com
Anne Eddy 503-245-7965 aeddy@cascdeds.com

There are several easy ways to donate to the Rieke Foundation:

- Send a check to:
Portland Schools Foundation
905 NW 12th
Portland, OR 97209
- Call 503-234-5404 to make a credit card donation or set up an automatic monthly withdrawal from a bank account.

VOLUNTEERS IN PORTLAND SCHOOLS

Volunteers contribute in many important ways at Rieke, such as coordinating family activities and events. They assist the school's staff by relieving them of many non-teaching tasks. Instructional support is also enhanced by volunteers providing additional assistance in the classroom. Volunteers play a vital role in the education of our students. We thank them for the many hours donated to our program. Contact the Rieke Volunteer Coordinator, to discover how you can help!

All volunteers need to sign-in when first entering the school. A special binder is kept in the office for this purpose. Remember to sign-in and wear your VOLUNTEER BADGE. If you have any questions, or need help, see our School Secretary.

DISTRICT RESOURCES

BEFORE AND AFTER SCHOOL OPTIONS

Vermont Hills Family Life Center 503-452-8633
Portland Jewish Academy Child Care 503-452-3431

PORTLAND PUBLIC SCHOOLS

Wilson Community Schools Area Office..... 503-916-6540
Blanchard Education Service Center..... 503-916-2000
Robert Gray Middle School..... 503-916-5676
Wilson High School 503-916-5280
PTA Clothes Closet 503-916-5840 ext. 266
Student Transportation 503-916-6901
Portland Public Schools Information 503-916-3304
Wilson Preschool..... 503-916-5280



September

<i>Sun</i>	<i>Mon</i>	<i>Tue</i>	<i>Wed</i>	<i>Thu</i>	<i>Fri</i>	<i>Sat</i>
			1 Professional Development/ Teacher Planning Day No School	2 Professional Development/ Teacher Planning Day No School	3 Schools and Offices Closed	4
5	6 Labor Day Holiday No School	7 Start of School Year grades 1-5 8:45 PTA Welcome Coffee in Gym	8	9	10 Start of School Kindergarten Kindergarten Parent Welcome 8:45 in library	11
12	13	14 Welcome Back Family Picnic 5:30-7:00 PTA Meeting	15	16	17	18
19	20	21	22 Late Opening	23	24	25
26	27	28 6:30 Curriculum Night	29	30		

2010

October

<i>Sun</i>	<i>Mon</i>	<i>Tue</i>	<i>Wed</i>	<i>Thu</i>	<i>Fri</i>	<i>Sat</i>
					1	2
3	4	5	6 International Walk & Bike to School Day	7 Fall Picture Day	8 Statewide In-Service Day No School	9
10	11 Scholastic Book Fair	12 Mid-Term Progress Reports PTA Meeting	13 Late Opening	14	15 Grandparents And Special Friends Day	16
17	18	19	20	21	22	23
24	25	26	27 Tag Parent Meeting	28	29	30
31						

2010

November

<i>Sun</i>	<i>Mon</i>	<i>Tue</i>	<i>Wed</i>	<i>Thu</i>	<i>Fri</i>	<i>Sat</i>
	1	2	3	4	5 Teacher Planning Day No School	6
7	8	9 Picture Re-take day PTA Meeting	10	11 Veterans' Day No School	12	13
14	15	16	17	18	19 Rieke Auction	20
21	22 Morning/Afternoon/ Evening Conferences No School	23 Morning /Afternoon Evening Conferences No School	24 No School	25 Thanksgiving Holiday No School	26 Schools and Offices Closed	27
28	29	30				

2010

December

<i>Sun</i>	<i>Mon</i>	<i>Tue</i>	<i>Wed</i>	<i>Thu</i>	<i>Fri</i>	<i>Sat</i>
			1	2 Grading Period Ends	3 Teacher Planning Day No School	4
5	6	7	8 Late Opening	9	10	11
12	13	14 PTA Meeting	15	16	17	18
19	20 Winter Break – No School	21 Winter Break – No School	22 Winter Break – No School	23 Winter Break – No School	24 Winter Break – No School	25
26	27 Winter Break – No School	28 Winter Break – No School	29 Winter Break – No School	30 Winter Break – No School	31 Winter Break – No School	

2010

January

<i>Sun</i>	<i>Mon</i>	<i>Tue</i>	<i>Wed</i>	<i>Thu</i>	<i>Fri</i>	<i>Sat</i>
						1 New Year's Day
2	3	4	5	6	7	8
9	10	11 PTA Meeting	12 Late Opening	13	14	15
16	17 Martin Luther King, Jr. Day No School	18	19	20	21	22
23	24	25 Mid-Term Progress Reports	26 7:00 Kindergarten Round Up	27	28	29
30	31					

2011

February

<i>Sun</i>	<i>Mon</i>	<i>Tue</i>	<i>Wed</i>	<i>Thu</i>	<i>Fri</i>	<i>Sat</i>
		1	2	3	4	5
6	7	8 PTA Meeting	9 Late Opening	10	11	12
13	14	15	16	17	18	19
20	21 Presidents' Day No School	22	23	24	25 High School Transfer Application Deadline	26
27	28					

2011

March

<i>Sun</i>	<i>Mon</i>	<i>Tue</i>	<i>Wed</i>	<i>Thu</i>	<i>Fri</i>	<i>Sat</i>
		1	2	3	4	5
6	7	8 PTA Meeting	9 Late Opening	10	11 Elementary/Middle School Transfer Application Deadline	12
13	14	15	16	17 Grading Period Ends	18 Teacher Planning Day Snow Make-Up Day No School	19
20	21 Spring Break – No School	22 Spring Break – No School	23 Spring Break – No School	24 Spring Break – No School	25 Spring Break – No School	26
27	28	29	30	31		

2011

April

<i>Sun</i>	<i>Mon</i>	<i>Tue</i>	<i>Wed</i>	<i>Thu</i>	<i>Fri</i>	<i>Sat</i>
					1	2
3	4	5	6	7	8	9
10	11	12 PTA Meeting	13 Late Opening	14	15	16
17	18 Screen Free Week	19	20	21	22	23
24	25	26 Mid-Term Progress Reports	27	28	29	30

2011

May

<i>Sun</i>	<i>Mon</i>	<i>Tue</i>	<i>Wed</i>	<i>Thu</i>	<i>Fri</i>	<i>Sat</i>
1	2 Staff Appreciation Week	3	4	5	6	7
8	9	10 PTA Meeting	11 Late Opening	12	13	14
15	16	17	18	19	20	21
22	23	24	25	26	27	28
29	30 Memorial Day Observed No School	31 Scholastic Book Fair				

2011

June

<i>Sun</i>	<i>Mon</i>	<i>Tue</i>	<i>Wed</i>	<i>Thu</i>	<i>Fri</i>	<i>Sat</i>
			1 Scholastic Book Fair	2	3 Carnival	4
5	6	7	8	9	10	11
12	13	14 Grading Period Ends End of School Year	15 Teacher Planning Day Snow Make-Up Day	16 Teacher Planning Day Snow Make-Up Day	17 Snow Make-Up Day	18
19	20	21	22	23	24	25
26	27	28	29	30		

2011

July

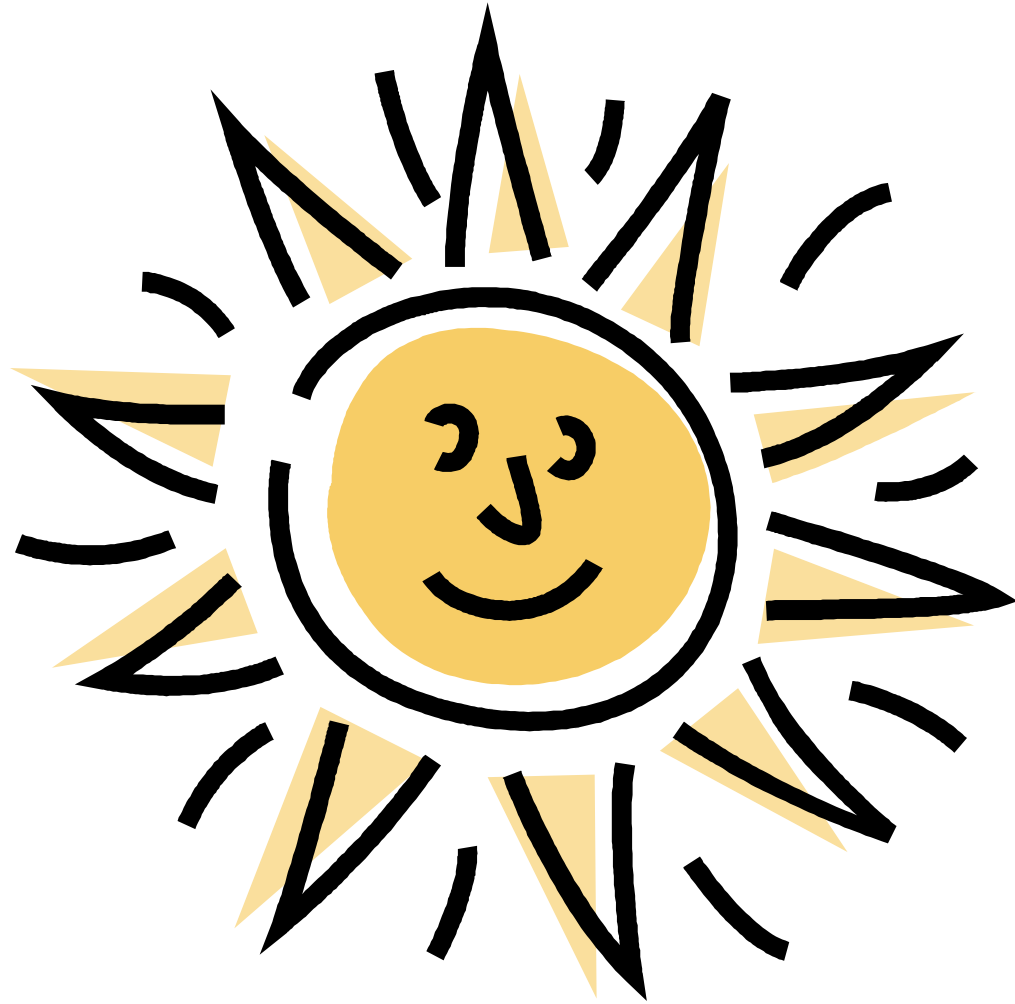
<i>Sun</i>	<i>Mon</i>	<i>Tue</i>	<i>Wed</i>	<i>Thu</i>	<i>Fri</i>	<i>Sat</i>
					1	2
3	4	5	6	7	8	9
10	11	12	13	14	15	16
17	18	19	20	21	22	23
24	25	26	27	28	29	30
31						

2011

August

<i>Sun</i>	<i>Mon</i>	<i>Tue</i>	<i>Wed</i>	<i>Thu</i>	<i>Fri</i>	<i>Sat</i>
	1	2	3	4	5	6
7	8	9	10	11	12	13
14	15	16	17	18	19	20
21	22	23	24	25	26	27
28	29	30	31			

2011



SCHOOL TRIMESTER CALENDAR

Schools following Trimester Calendar:

- Abemethy
- Access
- Almsworth
- Alameda
- Beach
- Beverly Cleary
- Boise-Elliott
- Bridger
- Creston
- Humboldt
- de Vinci
- Dunway
- Fairbion
- Forest Park
- Glencoe
- Grout
- Harrison Park
- Creative Science
- Hayhurst
- Humboldt
- James John
- Kelly
- King
- Laurelhurst
- Lae
- Lemt
- Lewis
- Llewellyn
- Maplewood
- Markham
- Marysville
- MLC
- Ockley Green
- Odyssey
- Perrinsula
- Richmond
- Rieke
- Riggler
- Rosa Parks
- Sablin
- Scott
- Sellwood
- Skylene
- Stephenson
- Sunnyside
- Vernon
- Vestal
- Whithran
- Woodlawn
- Woodmere
- Woodstock

TRIMESTER CALENDAR DATES FOR SCHOOL YEAR 2010-2011

Summer Scholars	First Semester: June 28-July 19 / Second Semester: July 26-August 13, 2010
Classified Connection Training Day	August 17, 2010
Community Care Day	August 28, 2010
Professional Development Day or Teacher Planning Day* (school decision)	August 31, 2010
Professional Development Day or Teacher Planning Day* (school decision)	September 1, 2010
Teacher Planning Day	September 2, 2010
Schools and Offices Closed	September 3, 2010
Labor Day Holiday (schools and all offices closed)	September 6, 2010
First Day of School for Students	September 7, 2010
(Kindergarten and PK classes will begin regular classroom instruction no later than September 10. Schools may choose to use the 7th, 8th and 9th for kindergarten assessment.)	September 10
Statewide Inservice (No school - all 190, 200, 210, 225 & 230 employees off)	October 8, 2010
PSAT Testing for All High School Sophomores (during regular school hours)	October 13, 2010
Teacher Planning Day and Classified Connection Training Day (no school for students)	November 5, 2010
Holiday in Celebration of Veterans' Day (schools and all offices closed)	November 11, 2010
Conferences	November 22, 2010
Morning, Afternoon and Evening Conferences (no school for students)	November 22, 2010
Morning, Afternoon and Optional Evening Conferences (no school for students)	November 23, 2010
Morning Conferences (no school for students; no afternoon school for teachers)	November 24, 2010
Thanksgiving Holiday (schools and all offices closed)	November 25 & 26, 2010
End of 1st Grading Period	December 2, 2010
Teacher Planning Day (no school for students)	December 3, 2010
Students' last day prior to Winter Break	December 17, 2010
Schools and Offices closed	December 24, 2010
Holiday in Celebration of New Year's Day (schools and all offices closed)	December 31, 2010
Students return following Winter Break	January 3, 2011
Martin Luther King Jr. Day Holiday Commemoration (schools and all offices closed)	January 17, 2011
High School Transfer - Opens	January 21, 2011
Elementary/Middle School Transfer - Opens	January 28, 2011
Presidents' Day Holiday (schools and all offices closed)	February 21, 2011
High School Transfer Deadline	February 25, 2011
Elementary/Middle School Transfer Deadline	March 11, 2011
End of 2nd Grading Period	March 17, 2011
Teacher Planning Day and Classified Connection Training Day (no school for students)	March 18, 2011
Spring Break (no school for students)	March 21-25, 2011
ACT Testing for All High School Juniors (during regular school hours)	April 27, 2011
Memorial Day Holiday (schools and all offices closed)	May 30, 2011
Last Day of School for Students	June 14, 2011
Teacher Planning Day (no school for students)	June 15 & 16, 2011
Snow Make-Up Days (END, GRD, PLAN days would be moved back accordingly)	June 15, 16 & 17, 2011
Summer Scholars	June 27 - August 12, 2011
Graduation Dates	June 5, 6, 7 & 8, 2011

GRADING PERIOD SCHEDULE FOR 2010-2011 SCHOOL YEAR

Start of First Grading Period	September 7, 2010	Start of Third Grading Period	March 28, 2011
End of First Grading Period	December 2, 2010	End of Third Grading Period	June 14, 2011
Start of Second Grading Period	December 6, 2010			
End of Second Grading Period	March 17, 2011			

EMPLOYEE WORK YEAR 2010-2011

190-Day Employees	August 31 to June 16	225-Day Employees*	August 16 to June 30
200-Day Employees	August 23 to June 22	230-Day Employees*	August 16 to June 30
210-Day Employees	August 16 to June 29	260-Day Employees	July 1 to June 30
215-Day Employees*	August 16 to June 30	Refer to 2010-2011 Employee Work Year Schedule for July/Aug. work day details		

Portland Public Schools Nondiscrimination Statement: Portland Public Schools recognizes the diversity and worth of all individuals and groups and their roles in society. All individuals and groups shall be treated with fairness in all activities, programs and operations, without regard to age, color, creed, disability, marital status, national origin, race, religion, sex, or sexual orientation — Board of Education Policy 1.80.020-P

Health Screenings

Oregon Law says that vision and hearing screenings shall be done to help find children's health problems. The nurse oversees these screenings. The usual screening schedule is:

Dental: Grades Pre-Kindergarten, Kindergarten, 1, 3, 5, and 7

Hearing: Grades Pre-Kindergarten, Kindergarten, and 1

Vision: Grades Pre-Kindergarten, Kindergarten, 1, 3, 5, and 7

If you do not want your child included in these screenings you must submit a written request to the school each school year. Screening results for dental, hearing and vision are all sent home to parents.

New Immunization Requirements for the 2010-11 School Year

Oregon law requires new students, including Pre-Kindergarten, Kindergarten, and 1st grade students, to have at least one dose of each required vaccine or appropriately signed exemption before attending school.

For 2010-2011, the following vaccines are required for a child 19 months old or older to be up to date.

Pre-Kindergarten	Diphtheria/Tetanus/Pertussis (DTaP): 4 doses
Head Start	Polio: 3 doses Measles, Rubella, Mumps (MMR): 1 dose received on or after first birthday Hepatitis B: 3 doses Hepatitis A: 2 doses Haemophilus influenzae type B (Hib): 1-4 doses (if under 5 years of age) Varicella (Chickenpox): 1 dose received on or after first birthday or has chickenpox history
Kindergarten, 1st and 2nd grade	Diphtheria/Tetanus/Pertussis (DtaP): 5 doses Polio: 4 doses Measles, Rubella, Mumps (MMR): 2 doses* first dose received on or after first birthday Hepatitis B: 3 doses Hepatitis A: 2 doses Varicella (Chickenpox): 1 dose received on or after first birthday or has chickenpox history
Grade 3-6 or 10-12	Diphtheria/Tetanus/Pertussis (DtaP): 5 doses Polio: 4 doses Measles, Rubella, Mumps (MMR): 2 doses* first dose received on or after first birthday Hepatitis B: 2 or 3 doses (depending on vaccine type) Varicella (Chickenpox): 1 dose (or 2 doses if vaccine is given at age 13 or older) received on or after first birthday or has chickenpox history
Grade 7-9	In addition to all vaccines for Grades 3-6 or 10-12, Grade 7-8 students also require Tdap: 1 dose * "Measles only" vaccine is acceptable for 1 dose

If additional vaccines are needed, call 503.988.3816 for Multnomah County Clinic locations

Portland Public Schools Nondiscrimination Statement: Portland Public Schools recognizes the diversity and worth of all individuals and groups and their roles in society. All individuals and groups shall be treated with fairness in all activities, programs and operations, without regard to age, color, creed, disability, marital status, national origin, race, religion, sex, or sexual orientation. — Board of Education Policy 1.80.020-P

District Title VI and Title IX Contact: Carolyn M. Leonard, Compliance (503-916-3183)

District 504 Contact: Suzy Harris, Integrated Student Support (503-916-2000 x74234)

American Disabilities Act Contact: Jeff Fish, HR Legal Counsel (503-916-3246)

Published by



*Portland Public Schools
Portland, Oregon*