

What Mt. Tabor Middle School is ~

"We only do middle school. What that means is Tabor understands teenagers and creates a safe environment for them to learn in."

"MTMS is green, artistic, musical, scientific, literate, global and experimental. Your one-stop learning center."

"Think Rigor — Preparing for success in high school and readiness for college."

"Teachers open their doors to examine and to share with each other best practices for professional development."



Learning Local



Mt. Tabor Middle School
Strong Community, Strong Results

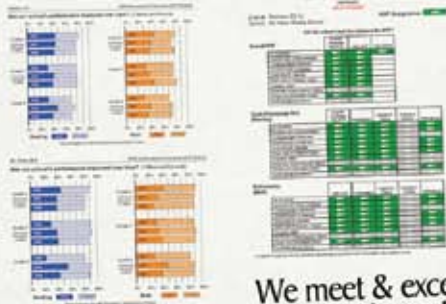


5800 S.E. Ash Street, Portland, Oregon 97215
Visit today! 503.916.5646

5800 S.E. Ash Street, Portland, Oregon 97215
<https://mttabor.pps.k12.or.us>

We support your vision.

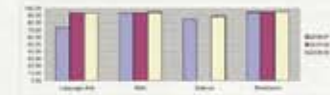
<https://mttabor.pps.k12.or.us> • see the State of the School ppt



Something to be proud of!

Mt. Tabor MS Academic Progress 2006-08

	2006-07	2007-08	2008-09
Language Arts	73.99	83.84	90.12
Math	93.74	93.84	94.51
Science	84.90	No Test	89.20
Attendance	94.40	94.70	95.00



We meet & exceed AYP federal standards!

Our state rating is **STRONG!**



New Textbook Adoptions
 Social Studies - History Alive
 Health
 Language Arts - EMC (last year)

Advanced Math Placement Rotation Classes
 Math & Science Enrichment
 Creative Writing
 Technology
 PE/Health
 Speech
 Band
 Art
 Leadership
 Project Green

We support your environment.

Project GREEN

Mr. Valenti
 Environmental Sustainability
 Responsible Decision Making
 School Wide Campaign - Recycling
 Making Differences - School and Community

Supported by Student Council and Leadership Class

Social Support Groups

- WHERE EVERYBODY BELONGS (WEB)
Ms. Toole and Mr. Groom
- PEER MEDIATION & PEER HELPERS
Help Increase the Peace (HIP)
Ms. Toole
- STUDENT COUNCIL
Ms. Truong and Mr. Wall
- SUN-AFTER SCHOOL ACTIVITIES
Ms. Aker



Lunch/Advisory

- Students have half an hour for lunch and recess
- 10-20 minutes for recess
- Improved student supervision during lunch
- Added 20 minutes per hour of instructional time
- Better support for students' needs through Advisory
- Reduce student pull out during instructional time for activities

We support your culture.



We support your child.



- Open to all students!
- Geography Bee
 - Spelling Bee
 - Oregon Writing Project
 - Saturday Academy Classes

Band, Art, Health
 Cedar Lodge mixed-age classroom
 Japanese Immersion Program
 Supported Education

Deaf & Hard of Hearing Program
 Homework.com Accountability
 Drama Production each Spring
 Talented & Gifted Plan

SUN School
 Raingarden Project
 Outdoor School
 Yearbook

Mt. Tabor Middle School

Strong Community, Strong Results

Visit today! 5800 S.E. Ash Street, Portland, OR 97215 • 503.916.5646