

THE BUILDING OF FRANKLIN HIGH SCHOOL



A PICTORIAL JOURNEY

Creston Elementary School Where FHS Began



48th and Powell

1915 SITE GRADING



Horses Grading Site





Foundation Construction 1915

First Floor Construction



Clock Tower Frame Construction



First Floor Framing



First Floor Brick Work



Frame Construction 1915



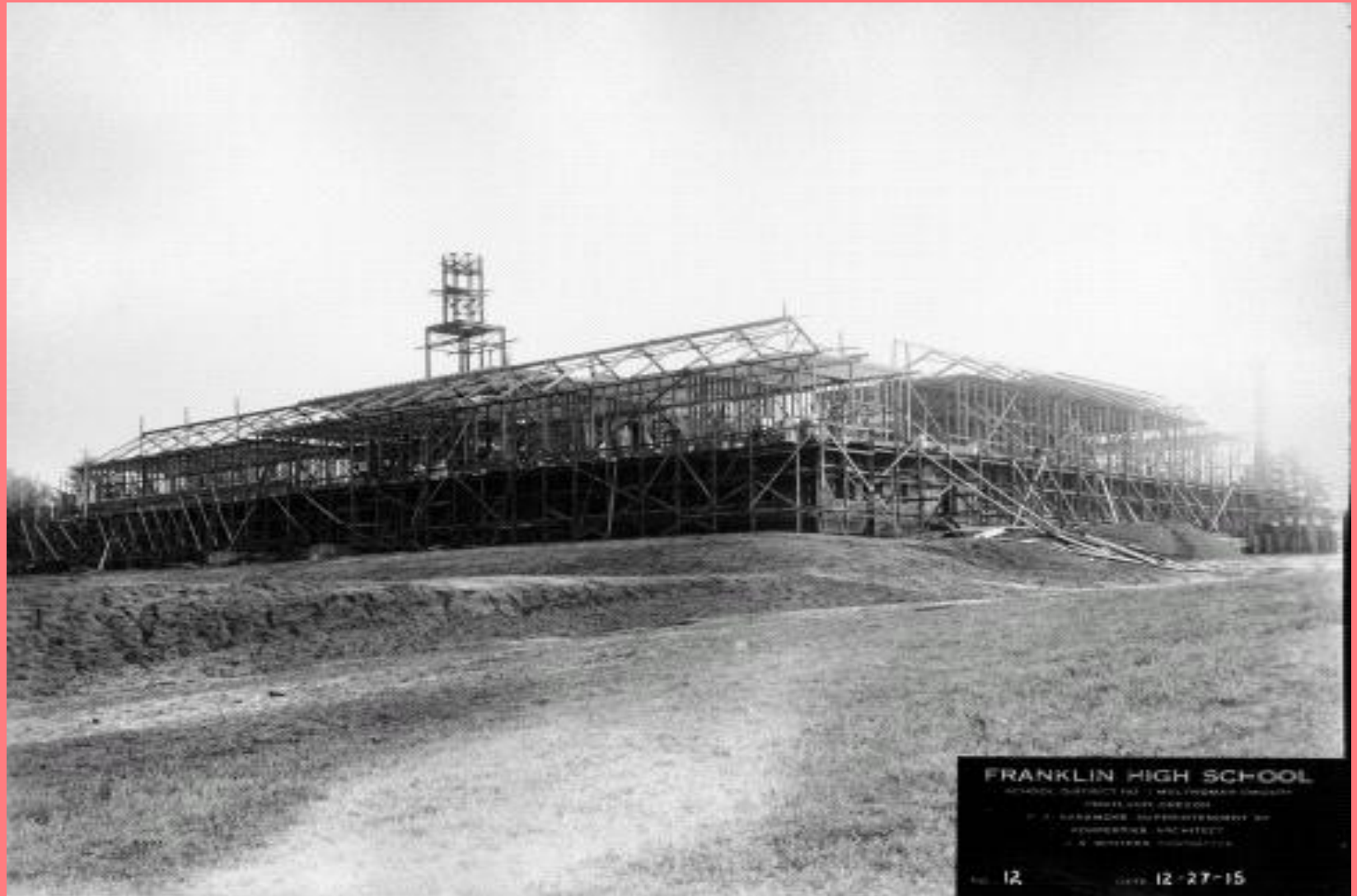
Framing looking from the South



Going Up 1915



Getting Closer to being Done



FRANKLIN HIGH SCHOOL

SCHOOL DISTRICT NO. 1, MULTNOMAH COUNTY

1911 AND 1920

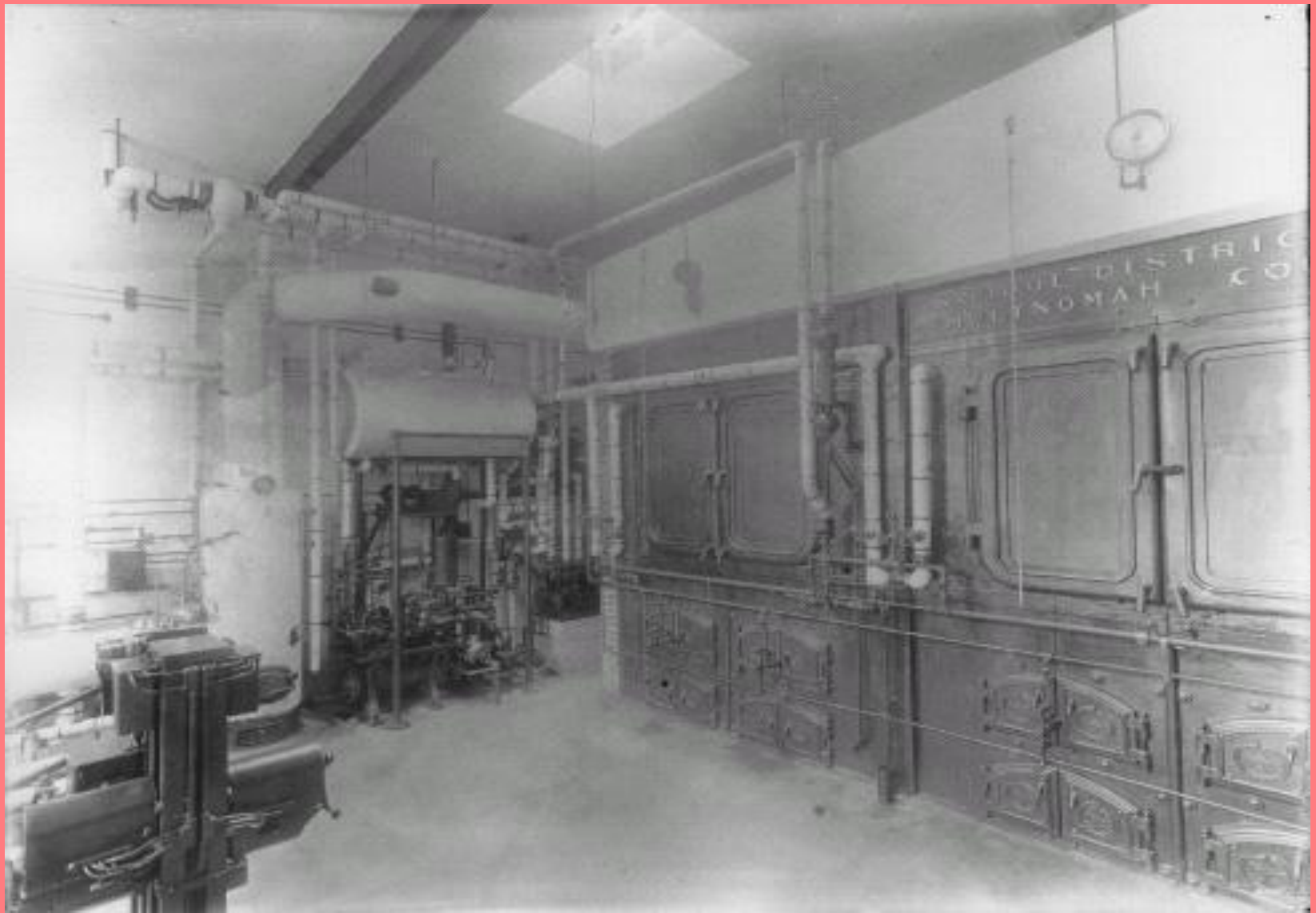
BY A. SANDER, SUPERVISOR OF

CONSTRUCTION ARCHITECT

J. B. BOSTON, ENGINEER

No. 12

DATE 12-27-15



The Original Boiler Room 1916

Looking at the Main Staircase from where “Benji” stands



The Generators – We made our own Electricity in the beginning



Gym Foundation



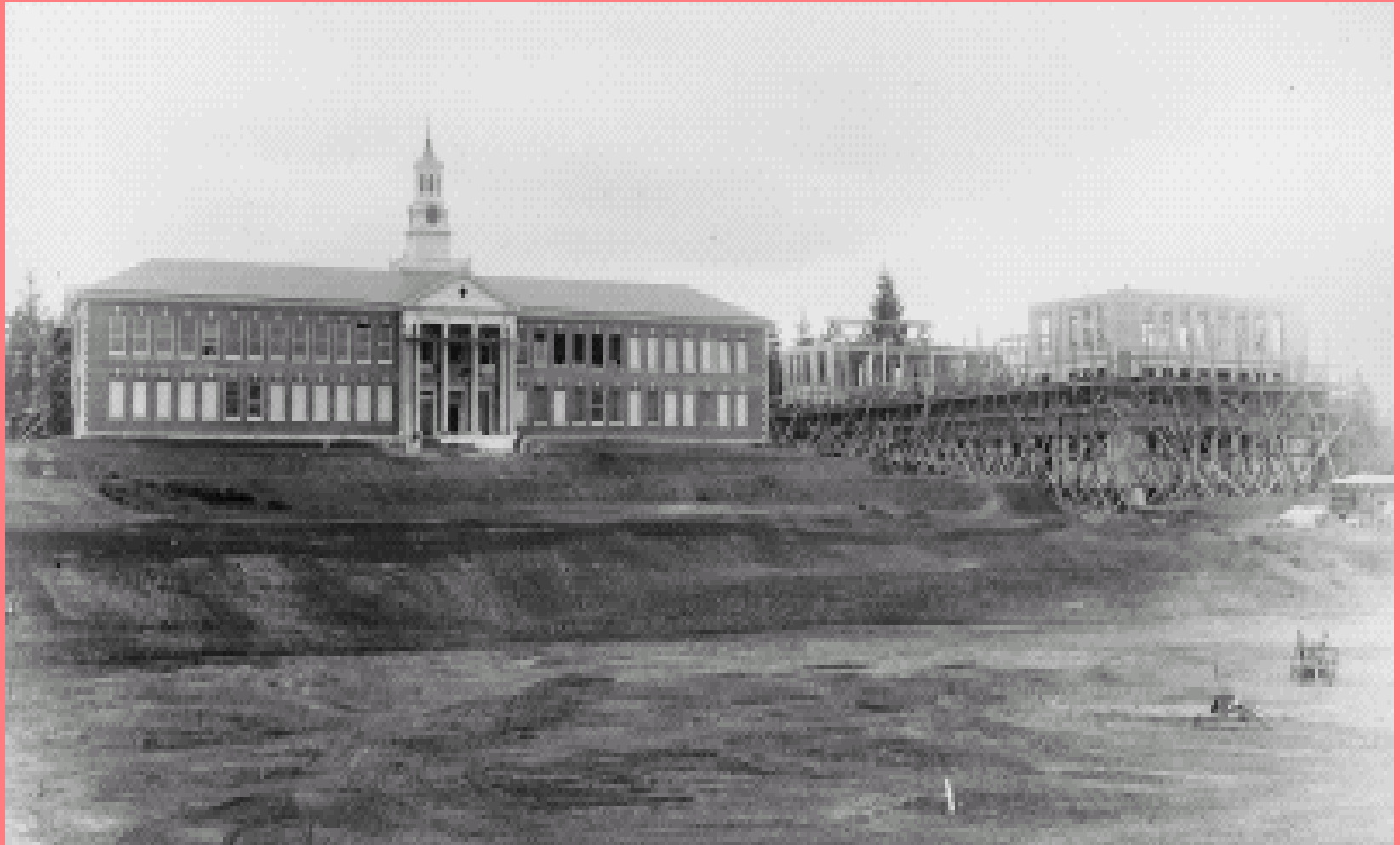
Up goes the Gym



More Progress on the Gym



Second Story to the Gym



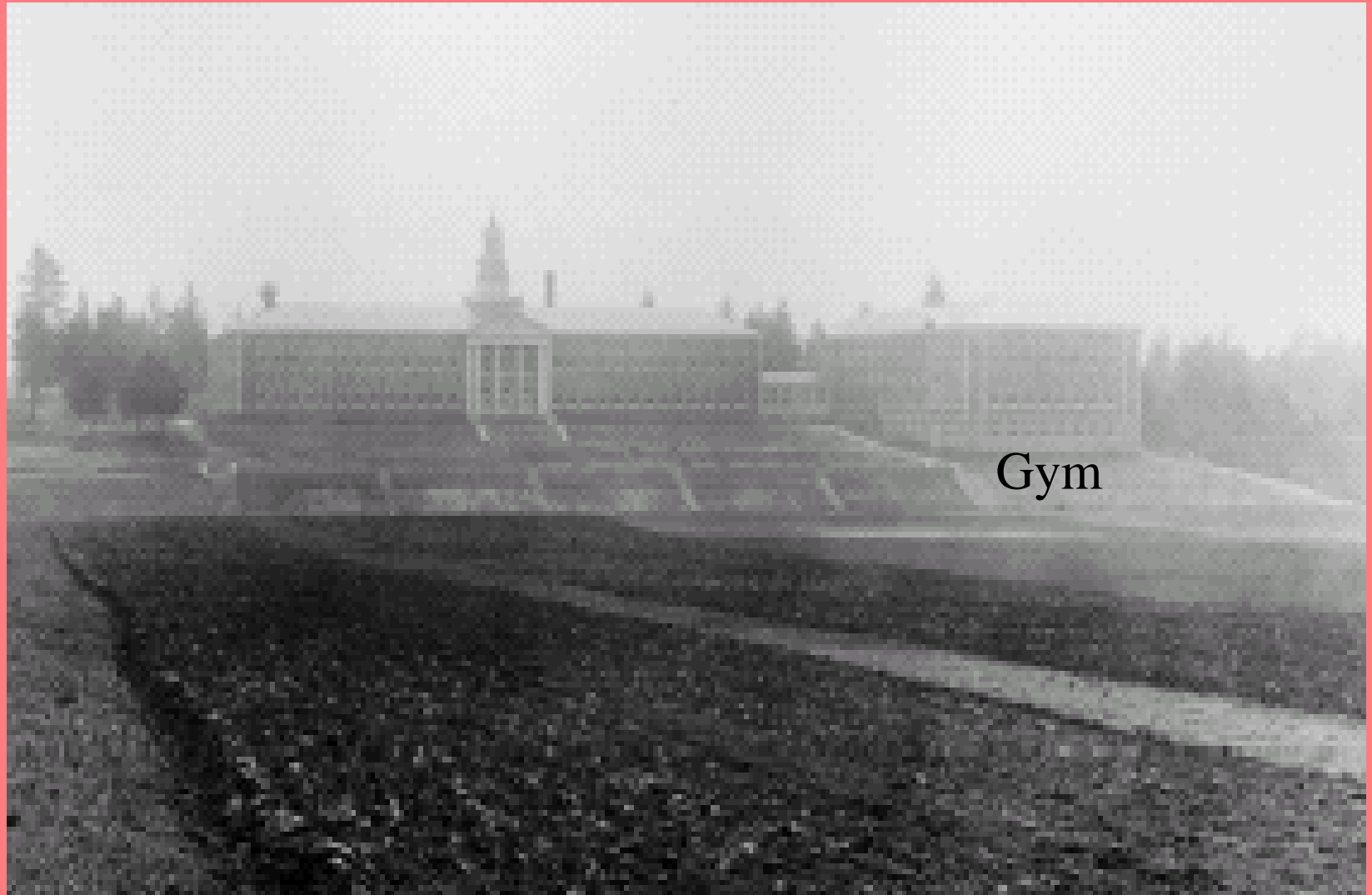
The Gym Almost Done



Our First Gym – Where the Science rooms are now



From Division Street 1916



Clock Tower - Brick Work from the South



Steam Power at Work 1916



The Other wing of the School Goes Up



From the South Side of the School – Almost Done 1916



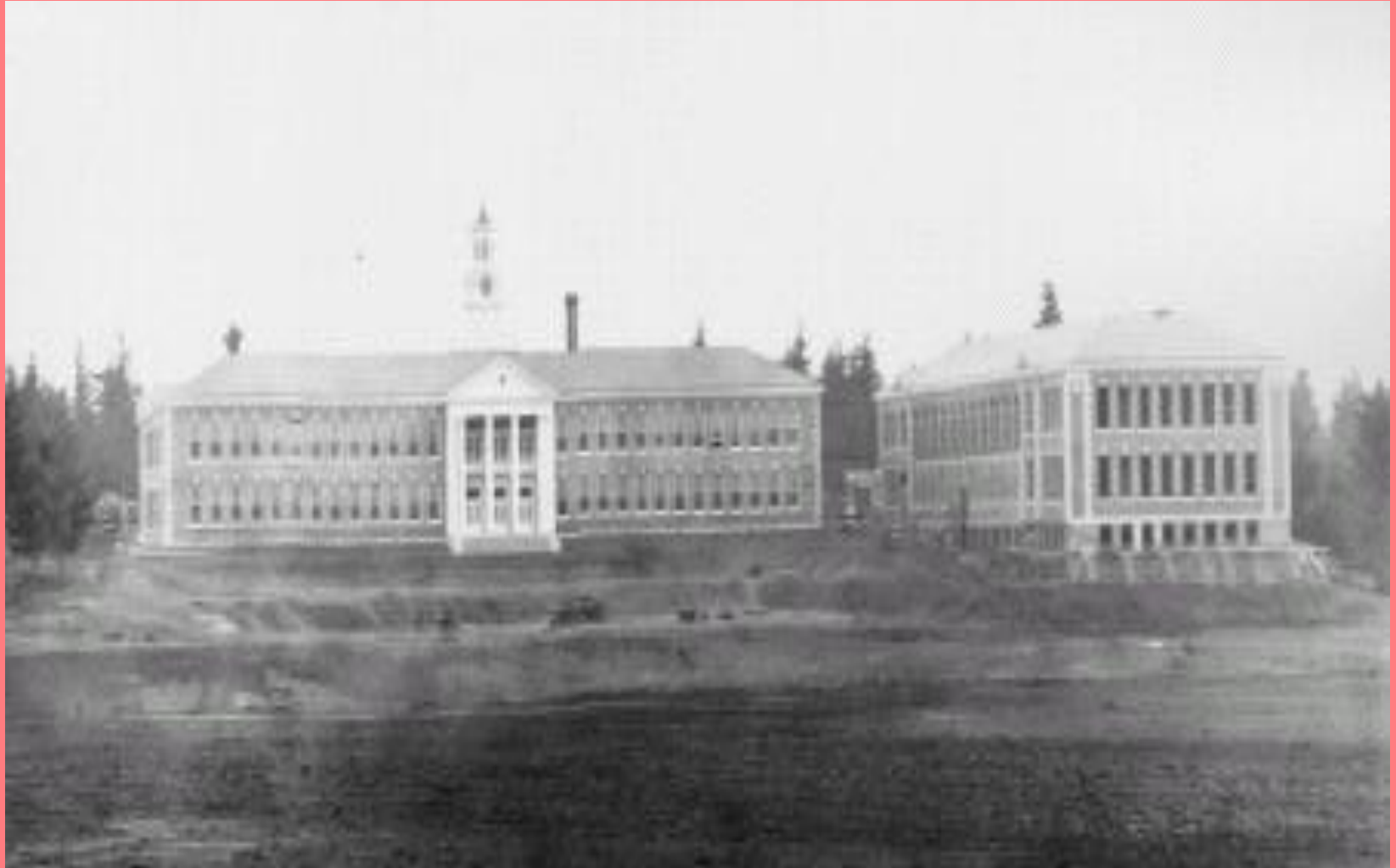
Steam Engines At Work in the Bowl



Starting Landscaping View from the South



Main Building and the Gym from the North 1916



Construction of the Bleachers and Football Field 1916



From Woodward – New walks and Landscaping



The End

We hope you enjoyed the trip

