

GREATEST COMMON FACTOR

method #1: List factor pairs & find the largest common factor.

$$\underline{24}$$

$$8 \times 3$$

$$4 \times 6$$

$$12 \times 2$$

$$1 \times 24$$

$$\underline{60}$$

$$5 \times 12$$

$$4 \times 15$$

$$2 \times 30$$

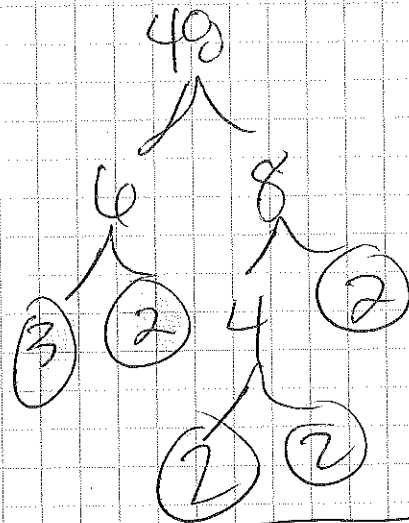
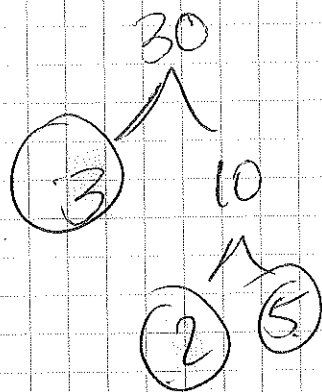
$$10 \times 6$$

$$1 \times 60$$

$$20 \times 3$$

$$\boxed{\begin{aligned} \text{GCF}(24, 60) \\ = 12 \end{aligned}}$$

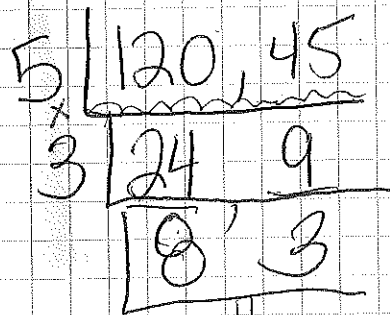
method #2: Make Factor Trees & multiply the common primes.



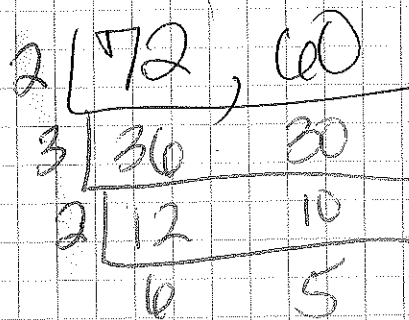
$$3 \times 2 = 6$$

$$\boxed{\text{GCF}(30, 48) = 6}$$

method #3: make a layer cake by factoring & multiply the side.



$$\boxed{\text{GCF}(120, 45) = 15}$$



$$\boxed{\begin{array}{l} \text{GCF} \\ (72, 60) \\ = 12 \end{array}}$$