

COMMUNICATION

A child's life is like a piece of paper on which every person leaves a mark.

~Chinese Proverb

Ms. Scheller and I look forward to getting to know you and your child this year. You are your child's greatest teacher and we appreciate any information that you have that will help your child feel comfortable at school. We understand that this is a time filled with mixed emotions. We will work together to make this a very positive experience for your child. We believe in a strong home-school connection, so please let us know if you have any questions or concerns. My contact information as well as Ms. Scheller's is listed below. We will make every effort to return messages and emails within 24 hours. We will also be sending home newsletters on a regular basis documenting what we have been working on in class as well as upcoming events.

MICAH BARASCH

Telephone: 503-916-6303

Email: mbarasch@pps.net

MACKENSIE SCHELLER

Telephone: 503-916-6303

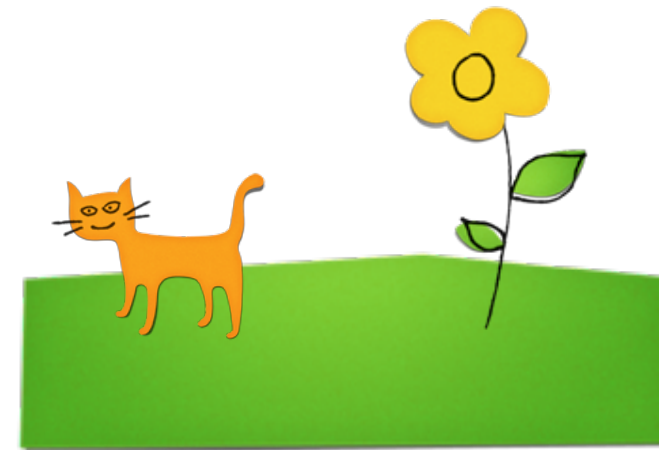
Email: mschelle@pps.net

Website: <http://www.pps.k12.or.us/schools/capitolhill/248.htm>



WELCOME TO

KINDERGARTEN...



STUDENT TAKE-HOME FOLDERS

Your student will bring home a folder today that they will use throughout the school-year. The purpose of the folder is to both increase communication between home and school while also promoting student responsibility. One side of the folder has a "Home" label where students will put items that go home with them that day. The other side is for "School" where any correspondence from home can be tucked to come back to me (i.e. absence notes, permission slips, alternate pick-up schedule, etc). You can help by talking with your child about the folder and reminding them in the beginning of the year to both return the folder and check it nightly with them.



SPECIALS SCHEDULE

Below is our specials schedule for the schoolyear. Please make an extra effort to have your child to school on time the days our specials start between 8:00-8:10.

Music

Tuesday 8:10-8:30

Friday 12:50-1:20

Library

Wednesday 1:45-2:15

P.E.

Wednesday 1:15-1:45

Friday 8:00-8:30 (*Every other Friday)

UPCOMING EVENTS

PARENT VOLUNTEERS

There will be a parent volunteer orientation in early October which will provide additional information about volunteering. Ms. Scheller will start volunteers in mid to late October. We try to give the children a chance to adapt to our routines before we introduce parent helpers into the classroom. Ms. Scheller will take the first few weeks when she starts to acclimate the class. We look forward to having you in the classroom!

TWO HOUR LATE OPENING

Just a friendly reminder that Wednesday,

September 21st is a Two Hour Late Opening.

School will start at 9:50 on these days. Please help remind your students of this and let me know if you have any questions. If your student is half day and we have not already touched base, please check in with me before that Wednesday.

BACK TO SCHOOL NIGHT/FAMILY PICNIC

Please mark your calendars for our Back to School Night/Family Picnic on **Thursday, September 22nd at 5:00pm.**

MORNING ROUTINE

We start every morning at 7:50am. The tardy bell will ring at 8:00. **After the tardy bell, your child will need to check in at the office to get a tardy slip to bring down to class.** If you accompany your child to school, I encourage you to help them put away their coats and backpacks on their hooks, Take-Home folder in the basket, and place their lunches, if they have one, in one of the blue lunch tubs outside the door. Students will have a symbol next to their hook on which they may hang their coats and backpacks. Students will then help with the attendance and report that they are here by placing their card (soon to be a photo) on either the yes or no side of a daily question). Please help your child with answering the question in the beginning of the year if you accompany them to school. They then begin their morning work at their seats which consists of concepts and skills we are learning and practicing. After our morning work is complete, we read books quietly until it is time for circle/calendar time.

DISMISSAL & SAFETY

At the end of the day, I will walk students up to the main hallway and direct them to where they need to go (i.e. parent-pickup, bus) based on the after school schedule you provided in the registration packet. ExAcademy students will be picked up from our classroom before we leave. I typically start to walk students down before 2:15 (2:10ish) to allow for extra time and to avoid crowded hallways. **Please help to promote a safe and smooth transition with the following items:**

- If you are picking up your child, both you and your child must make eye contact with me so I know you have them. Please help remind your child to tell me that they see you before leaving the line.
- If you need to take your child home early (even at 2:00), you must sign them out in the office.
- You may indicate who can pick up your child on their registration form in the office. If they are being picked up by someone who is not listed on their registration form, you must let me know in writing.
- Please inform me of any after school changes that arise by that morning at the latest. I may not get to emails or messages during the school day. Kindergartners often get confused about their after school schedule and I am required to follow the schedule you provide unless notified otherwise.

HELPFUL INFO

SNACK/LUNCH TIME

Our snack will be every morning when we go outside for recess around 9:00. We will use the snack donations from the beginning of the year to provide the snack. Lunch is from 11:00-11:45.

SHOES/JACKETS

For safety reasons, please do not allow your child to wear flip flops or crocks to school. While they make a great alternative to sandals, they are not safe on the playground equipment. Please also send your child with a jacket every day when the weather gets colder. During these months, I will always have students bring out a jacket to both morning and lunch recess.

TOYS

Please ensure that your child leaves toys at home. Personal toys lead to distractions, hurt feelings, and students often try to trade them. If for some reason they need to have some type of toy/special object with them for an after-school activity or transition, please remind your child to keep them in their backpack.

PLAY DATES

If your child is going home with another child's family, I need to have written authorization from you before they can leave with another parent. Please let me know that morning at the latest if your child will have an alternate after school schedule or send a written note in their take-home folder. Thank you in advance for your help!