



# Jefferson-Area Eighth-Graders: Choosing a high school

2012-2013

Hello Eighth Graders! This is an important year for you. It's the year when you decide where you are going to high school. And if you live in the Jefferson High School attendance area, you have some unique choices. In this hand-out you will:

- Learn about your high school choices.
- Choose your high school or learn additional steps needed to do so.

## Step One: Learn about your high school choices

Jefferson area students in Portland Public Schools have the following choices:

- **Attend Jefferson or your assigned comprehensive high school:** Jefferson is now Jefferson High School – Middle College for Advanced Studies, which blends high school coursework at Jefferson with college courses at Portland Community College. Jefferson offers some but not all aspects of a traditional comprehensive high school. For that reason, area students can choose to attend Jefferson or choose a comprehensive high school determined by your address.

PPS guarantees you a spot at Jefferson **or** your comprehensive high school but requires that you formalize your choice with your school counselor. (See step two)

- **Apply for a transfer:** Like all other 8<sup>th</sup> graders, Jefferson area students can also apply during the February lottery for a transfer to another focus school – Benson Polytechnic High School or, for girls, Young Women's Leadership Academy @ Harriet Tubman. PPS also offers limited transfers to other neighborhood high schools and a range of alternative and charter high schools. *But PPS asks that students also identify their choice of Jefferson or their assigned comprehensive high school in case a transfer isn't granted.*

### What high school(s) am I assigned to?

To find out if you are in the Jefferson attendance area and/or to learn which high school, in addition to Jefferson, you are assigned to, go to: [www.pps.net/schoolchoice](http://www.pps.net/schoolchoice) Click on the "Find Your School" at the top of that page. Then type in your address.

If you know you are in the Jefferson area, use the grid or the map in this packet to identify your dual high school assignment.

### How can I find out what these high schools offer?

- The grid in this packet gives a thumbnail sketch of Jefferson and your assigned comprehensive high school. The grid includes school websites for additional information.
- Fact Sheets about all PPS high schools and information about charter and alternative high schools can be found on the PPS High School System webpage at: <http://www.pps.k12.or.us/departments/high-school-system/802.htm>
- Schools hold information sessions in January and February. Go to [www.pps.net/schoolchoice](http://www.pps.net/schoolchoice) and click on "Open House Dates" on the left side of the page, or call the school.

## Step Two: Make your choice

All Jefferson-area 8<sup>th</sup> graders must choose Jefferson or their assigned comprehensive high school. Students who wish to also apply for a transfer to another high school can download an application at [www.pps.net/schoolchoice](http://www.pps.net/schoolchoice) during the February transfer period.

***This form, signed by the parent or legal guardian, is given to the student's counselor at their middle or PK-8 school. The counselor will record the student's choice. Questions? Please call the PPS Enrollment & Transfer Center at 503-916-3205.***

Date \_\_\_\_\_ Grade \_\_\_\_\_ Current School \_\_\_\_\_

Student Name \_\_\_\_\_

Address \_\_\_\_\_

**High School Choice:** Please check one. If you choose your assigned comprehensive high school, please fill in the name of the school serving your address.

\_\_\_\_\_ Jefferson High School – Middle College for Advanced Studies - (OR) -

\_\_\_\_\_ (Your assigned comprehensive high school)

Signature: \_\_\_\_\_

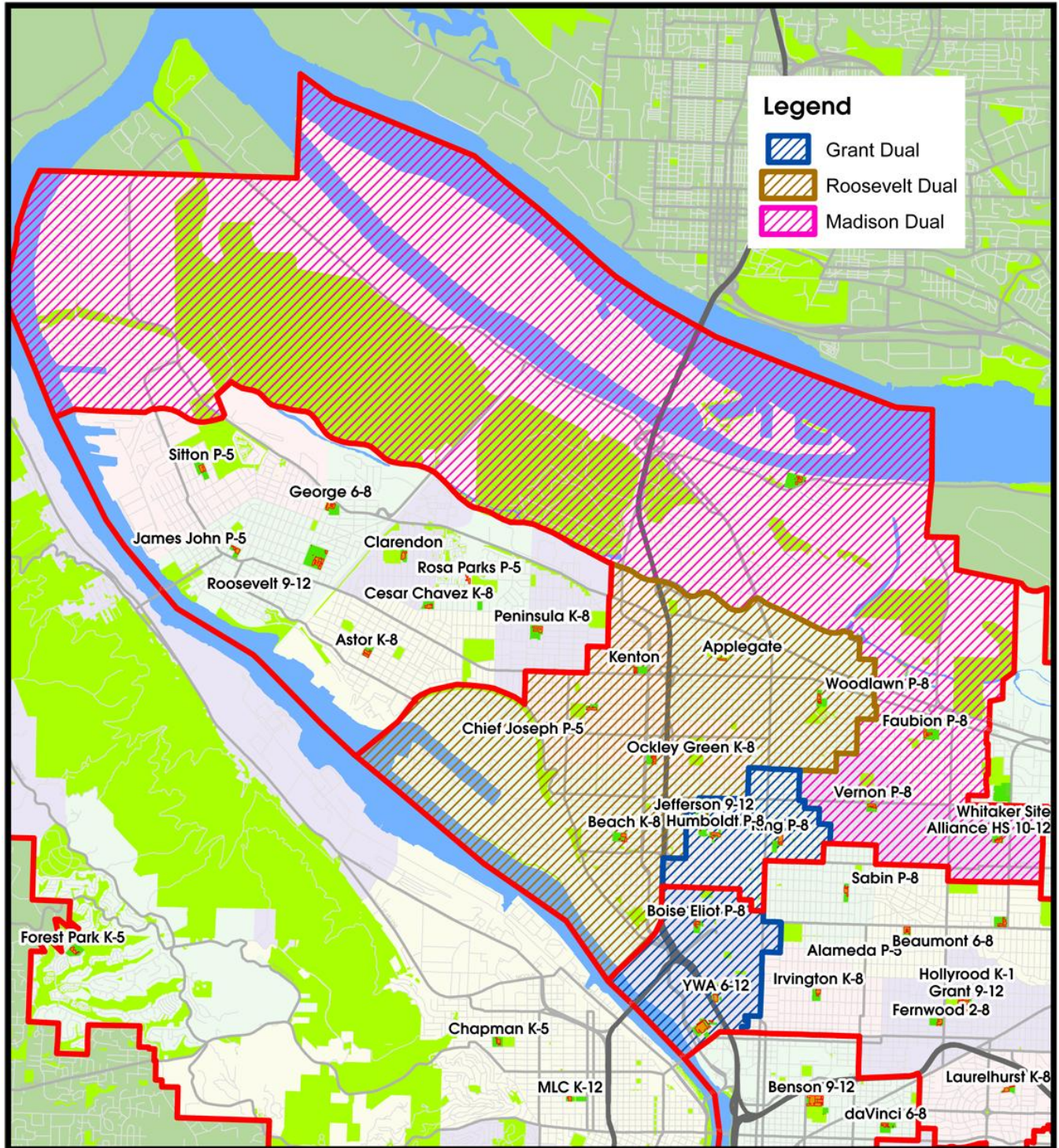
*Must be signed by the student's parent or legal guardian.*

## APPENDIX A: Identifying your dual assignment high schools

Elementary/ K-8 Attendance	High School Choices	
Beach PK-8  Chief Joseph/ Ockley Green K-8  Woodlawn PK-8  Faubion PK-8 (Hayden Island, Delta Park portions)	<p><b>Jefferson High School - Middle College for Advanced Studies</b>            5210 N. Kerby            Portland, OR 97217            Debbie Mabe, dmabe@pps.net            503-916-5180 x71279  <a href="http://www.pps.k12.or.us/schools/jefferson">www.pps.k12.or.us/schools/jefferson</a></p> <ul style="list-style-type: none"> <li>• Core and elective offerings at Jefferson including Health Science/Biotechnology program, Jefferson dance, and TV/Video production.</li> <li>• Freshman academies support transition to high school, college readiness.</li> <li>• Self Enhancement Inc. offers mentoring/social supports.</li> <li>• Athletics and activities.</li> <li>• Courses equaling up to or more than one year of college credit at Portland Community College, free of charge.</li> <li>• University of Oregon full tuition scholarship to Pell Grant eligible Jeff graduates (family income below \$50K) who complete a year of PCC credit.</li> </ul>	<p><b>Roosevelt High School</b>            6941 N. Central St.            Portland, OR 97203            503-916-5260            Elisa Schorr x65158,  <a href="mailto:ewinger@pps.net">ewinger@pps.net</a>            Leinaala Slaughter, x71409            lslaught@pps.net  <a href="http://www.pps.k12.or.us/schools/roosevelt">www.pps.k12.or.us/schools/roosevelt</a></p> <ul style="list-style-type: none"> <li>• Full core program, AP classes, dual-credit classes.</li> <li>• Spanish Immersion</li> <li>• College &amp; Career Transition Center and Writing Center</li> <li>• Athletics, activities, nationally recognized drama program</li> <li>• Federal grant to improve teacher training, technology and more</li> <li>• Mentoring, health and social supports</li> </ul>

<p>Boise-Eliot PK-8</p> <p>Humboldt PK-8</p> <p>King PK-8</p>	<p><b>Jefferson High School - Middle College for Advanced Studies</b>  5210 N. Kerby  Portland, OR 97217  Debbie Mabe, dmabe@pps.net  503-916-5180 x71279  <a href="http://www.pps.k12.or.us/schools/jefferson">www.pps.k12.or.us/schools/jefferson</a></p> <ul style="list-style-type: none"> <li>• Core, electives at Jefferson including Health Science/ Biotechnology, Jefferson dance, TV/Video production.</li> <li>• Freshmen academies support transition to high school, college readiness.</li> <li>• Self Enhancement Inc. offers mentoring/social supports.</li> <li>• Athletics and activities.</li> <li>• Courses equaling up to or more than one year of college credit at Portland Community College, free of charge.</li> <li>• University of Oregon full tuition scholarship to Pell Grant eligible Jeff graduates with a year of PCC credit.</li> </ul>	<p><b>Grant High School</b>  2245 N.E. 36<sup>th</sup> Ave.  Portland, OR 97212  Michelle Orr, <a href="mailto:morr@pps.net">morr@pps.net</a>  503-916-5160  <a href="http://www.pps.k12.or.us/schools/grant">www.pps.k12.or.us/schools/grant</a></p> <ul style="list-style-type: none"> <li>• Full core program, AP classes, dual-credit classes</li> <li>• Japanese Immersion</li> <li>• Full art and music program</li> <li>• Athletics, newspaper, mock trial, Model UN &amp; more</li> </ul>
<p>Vernon/Faubion</p> <p>Vernon PK-8</p> <p>Faubion PK-8  (Remainder of attendance area)</p>	<p><b>Jefferson High School - Middle College for Advanced Studies</b>  5210 N. Kerby  Portland, OR 97217  Debbie Mabe, dmabe@pps.net  503-916-5180, x71279  <a href="http://www.pps.k12.or.us/schools/jefferson">www.pps.k12.or.us/schools/jefferson</a></p> <ul style="list-style-type: none"> <li>• Core, electives at Jefferson including Health Science/ Biotechnology, Jefferson dance, TV/Video production.</li> <li>• Freshmen academies support transition to high school, college readiness.</li> <li>• Self Enhancement Inc. offers mentoring/social supports.</li> <li>• Athletics and activities.</li> <li>• Courses equaling up to or more than one year of college credit at Portland Community College, free of charge.</li> <li>• University of Oregon full tuition scholarship to Pell Grant eligible Jeff graduates with a year of PCC credit.</li> </ul>	<p><b>Madison High School</b>  2735 N.E. 82<sup>nd</sup> Ave.  Portland, OR 97220  Contact: Julie Hunt, <a href="mailto:jhunt@pps.net">jhunt@pps.net</a>  503-916-5220, x79376  <a href="http://www.pps.k12.or.us/schools/madison">www.pps.k12.or.us/schools/madison</a></p> <ul style="list-style-type: none"> <li>• Full core program, AP classes, dual-credit classes</li> <li>• Visual and performing arts, full music program</li> <li>• Athletics, newspaper, community garden, literary magazine, speech &amp; debate</li> <li>• Mentoring, health and social supports</li> <li>• Federal grant to improve teacher training, technology and more.</li> </ul>

## APPENDIX B: Jefferson Dual Assignment Map



Students who live in the Jefferson attendance area can choose to attend Jefferson High School – Middle College for Advanced Studies or their assigned community comprehensive high school (Roosevelt, Grant or Madison, determined by the student’s home address).

Reading the map:

- The colored/stripped portion of the map is the Jefferson attendance area. The elementary/K-8 schools in the area are listed for reference.
- All students who live in the colored/stripped portion can choose to attend Jefferson. Or, to determine their assigned comprehensive high school, use the color key included with the map.