

# Enrollment Trends and Forecasts

**Portland Public Schools  
October 17, 2011**



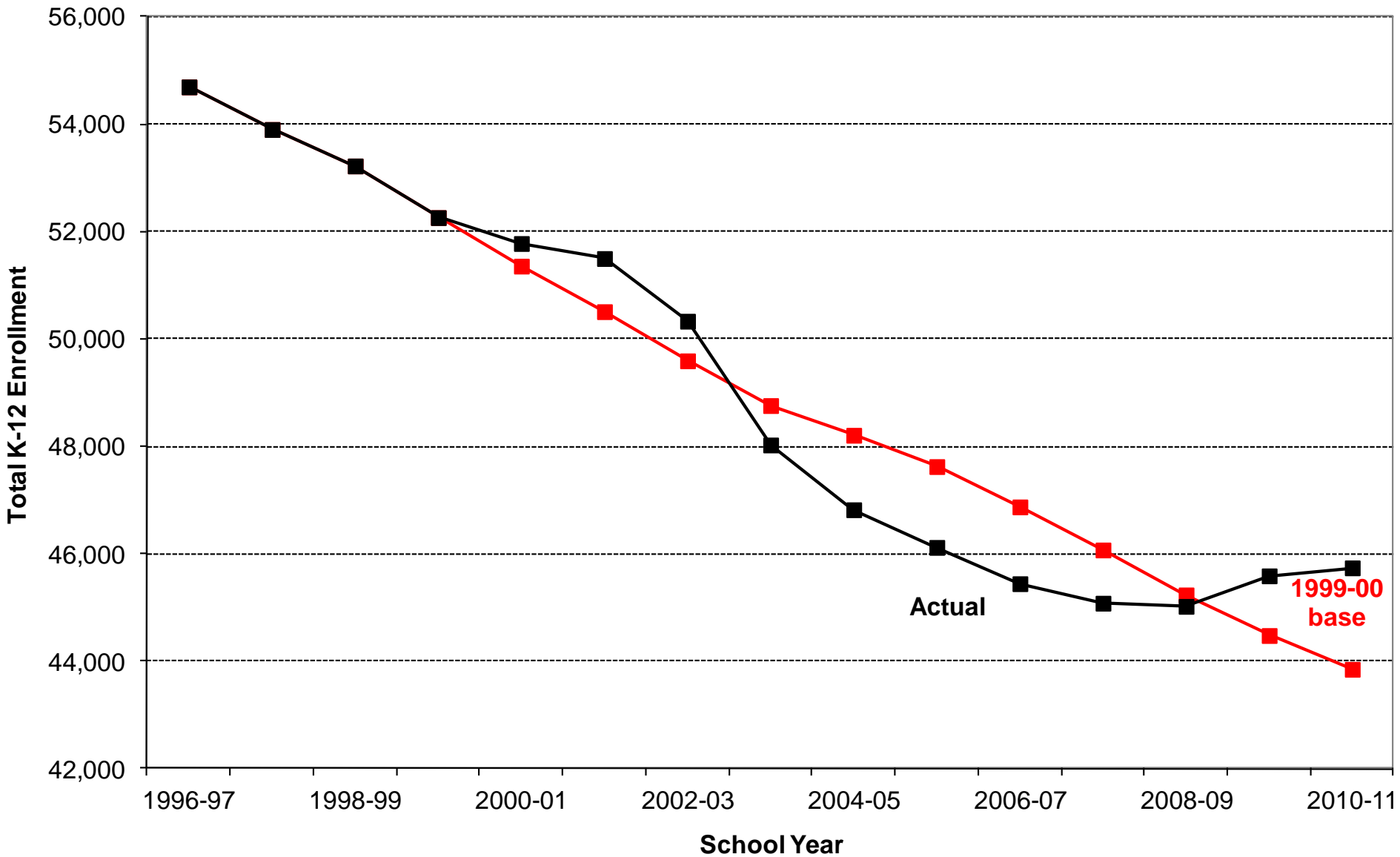
Charles Rynerson  
Census State Data Center Coordinator  
Population Research Center  
College of Urban and Public Affairs



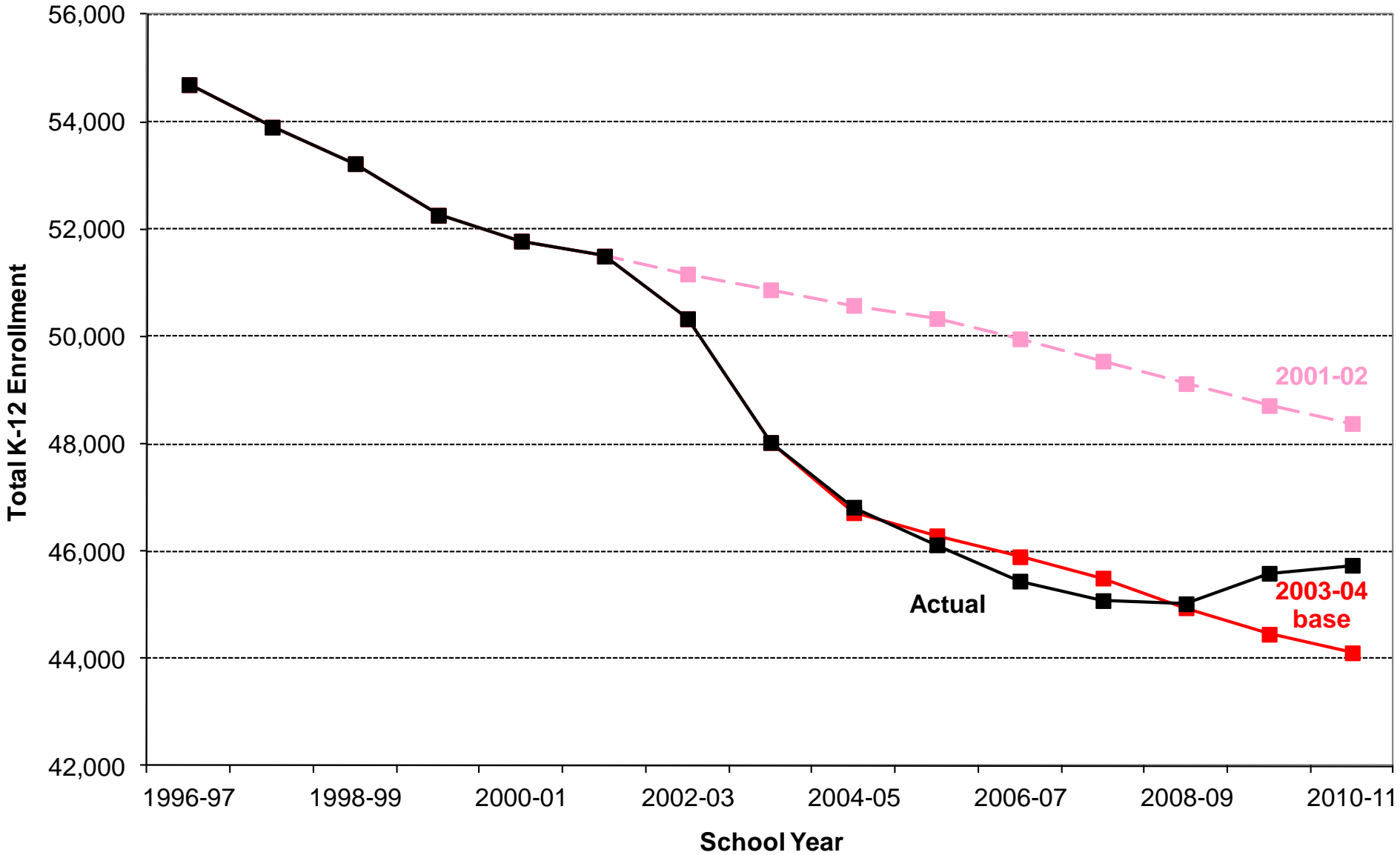
# PSU Enrollment Forecasts for PPS

- 12 consecutive years
- Long range focus
- Low, Middle, High District-wide
- Attendance Areas
- Individual Schools

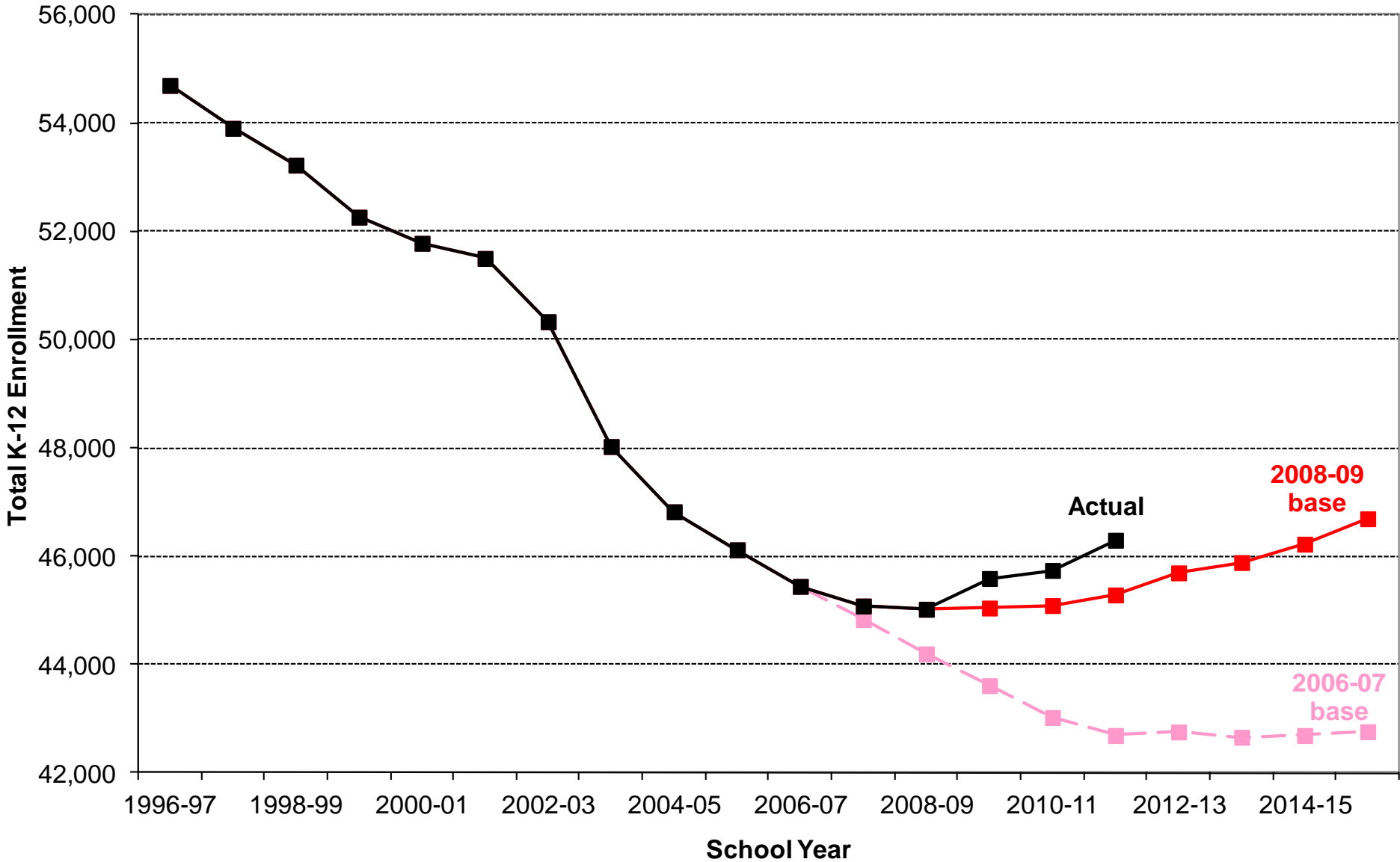
# District-wide K-12 Forecast: 1999-2000 Base Year



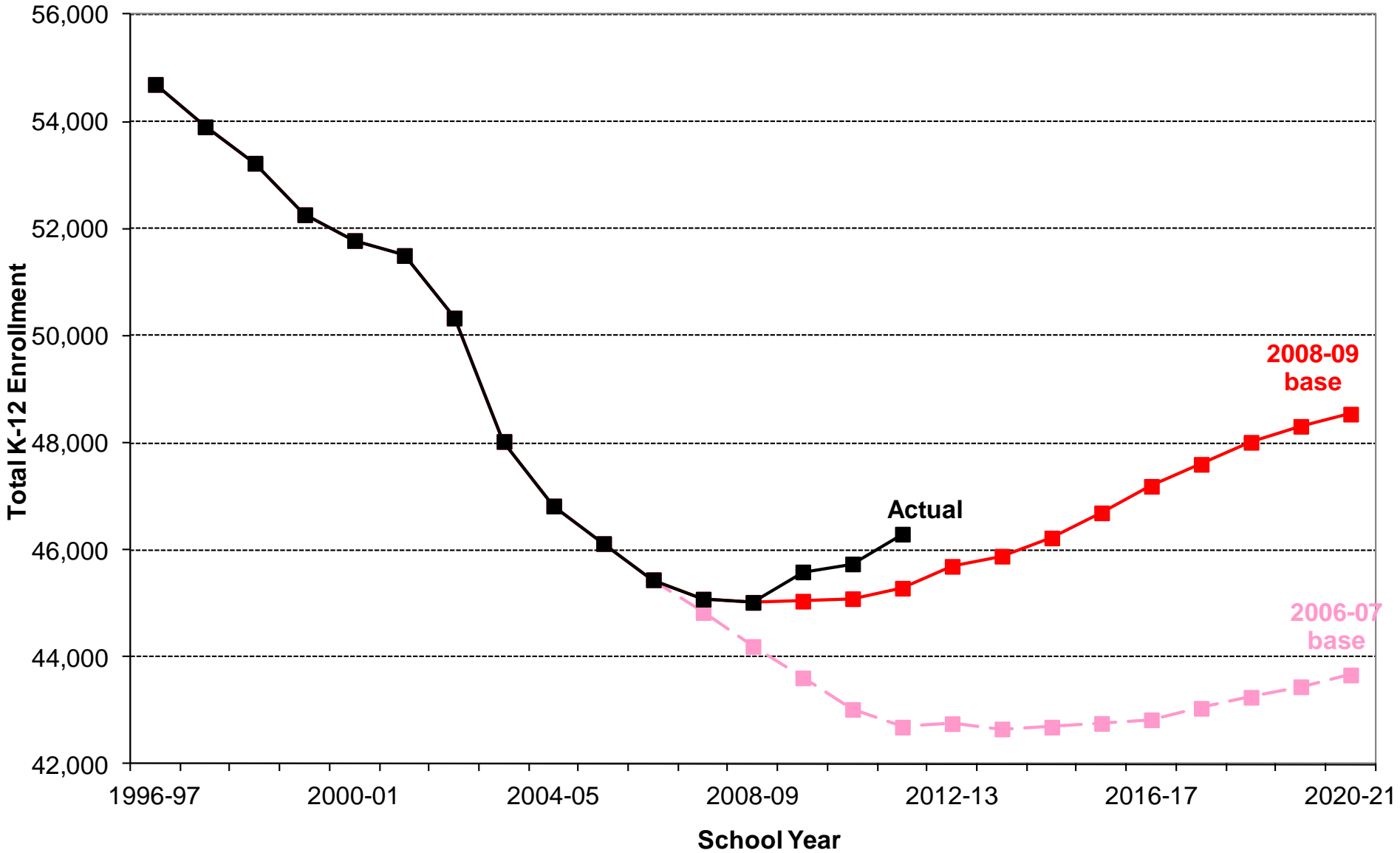
# District-wide K-12 Forecast: 2003-04 Base Year



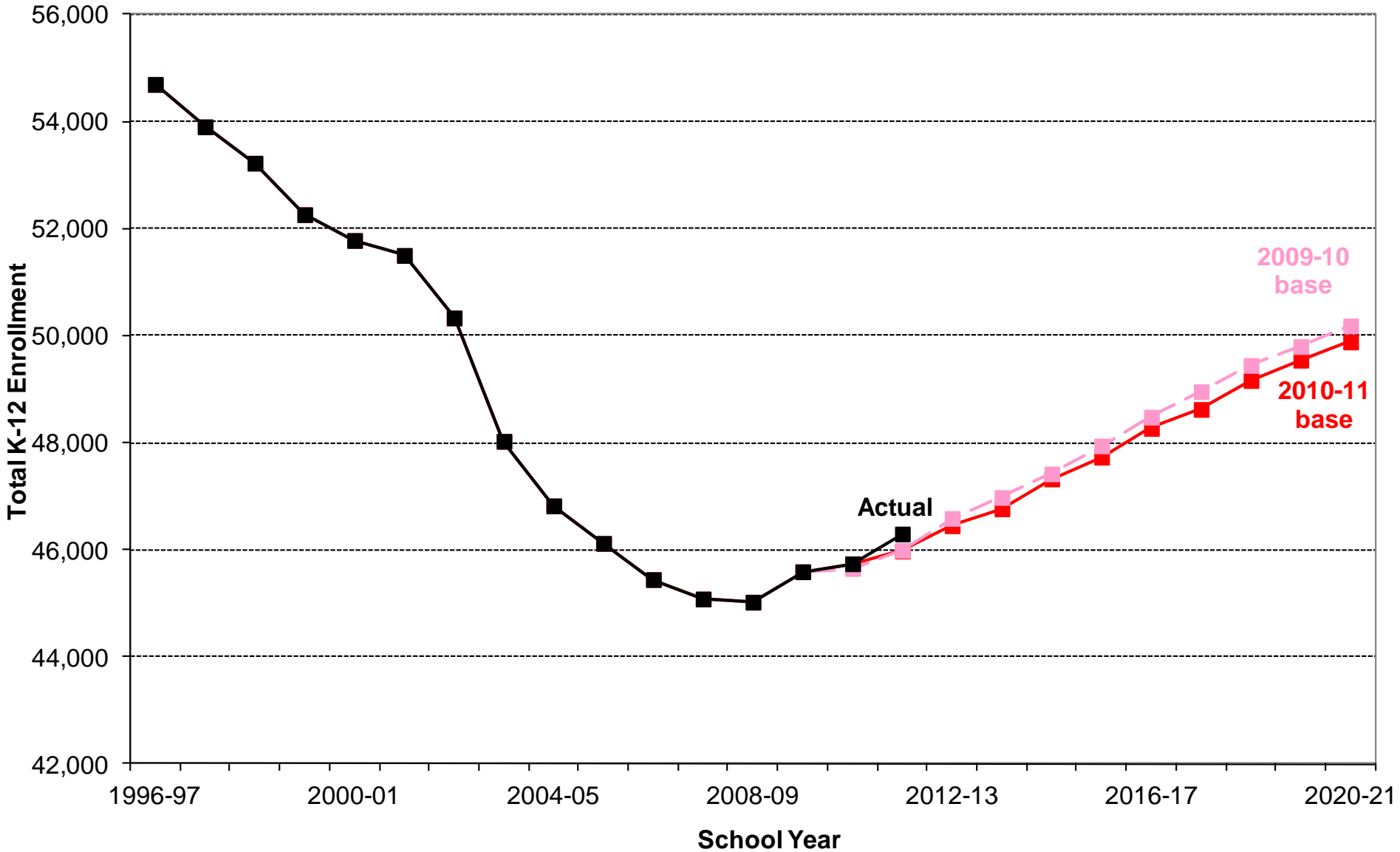
# District-wide K-12 Forecast: 2008-09 Base Year



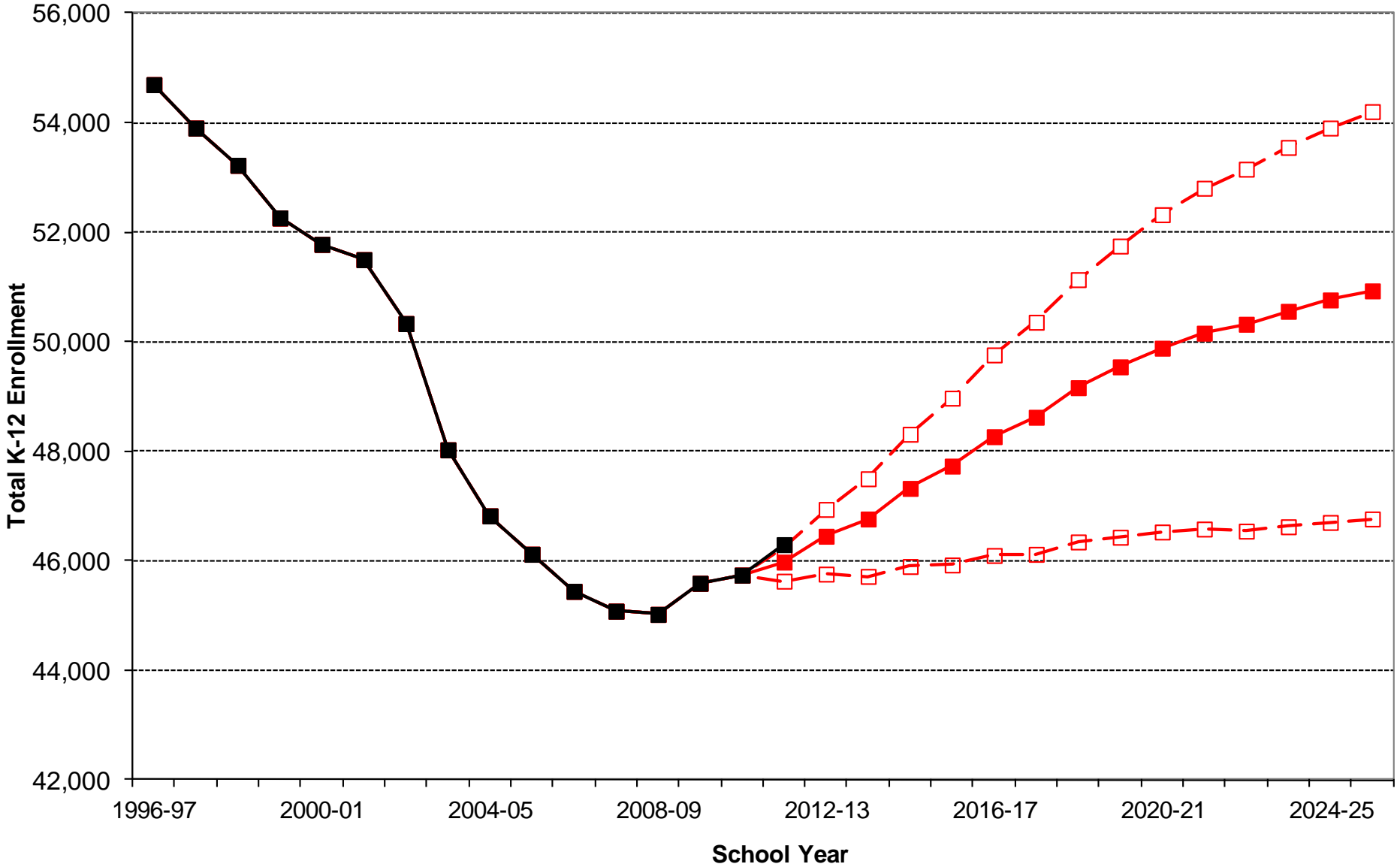
# District-wide K-12 Forecast: 2008-09 Base Year



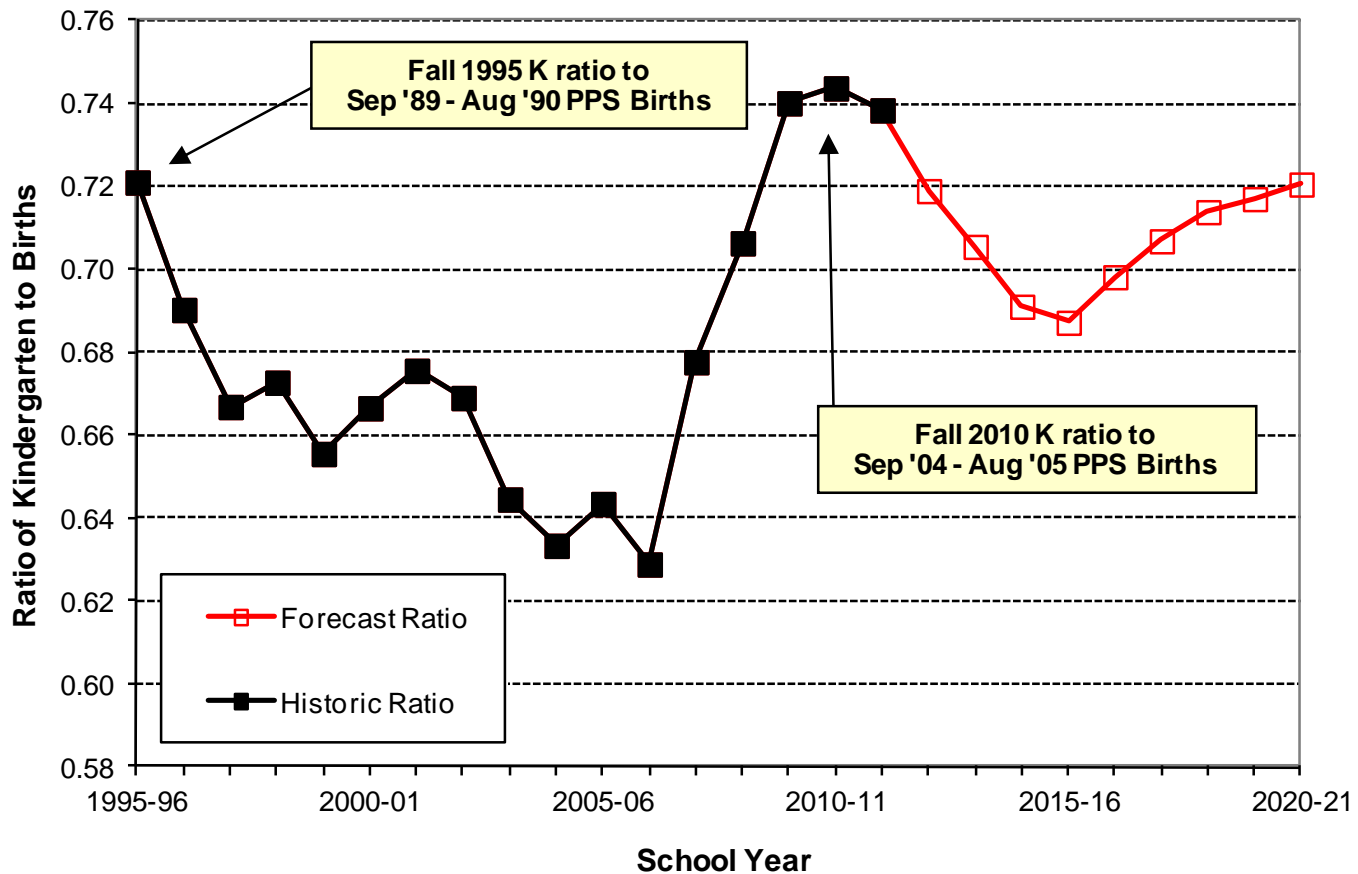
# District-wide K-12 Forecast: 2010-11 Base Year



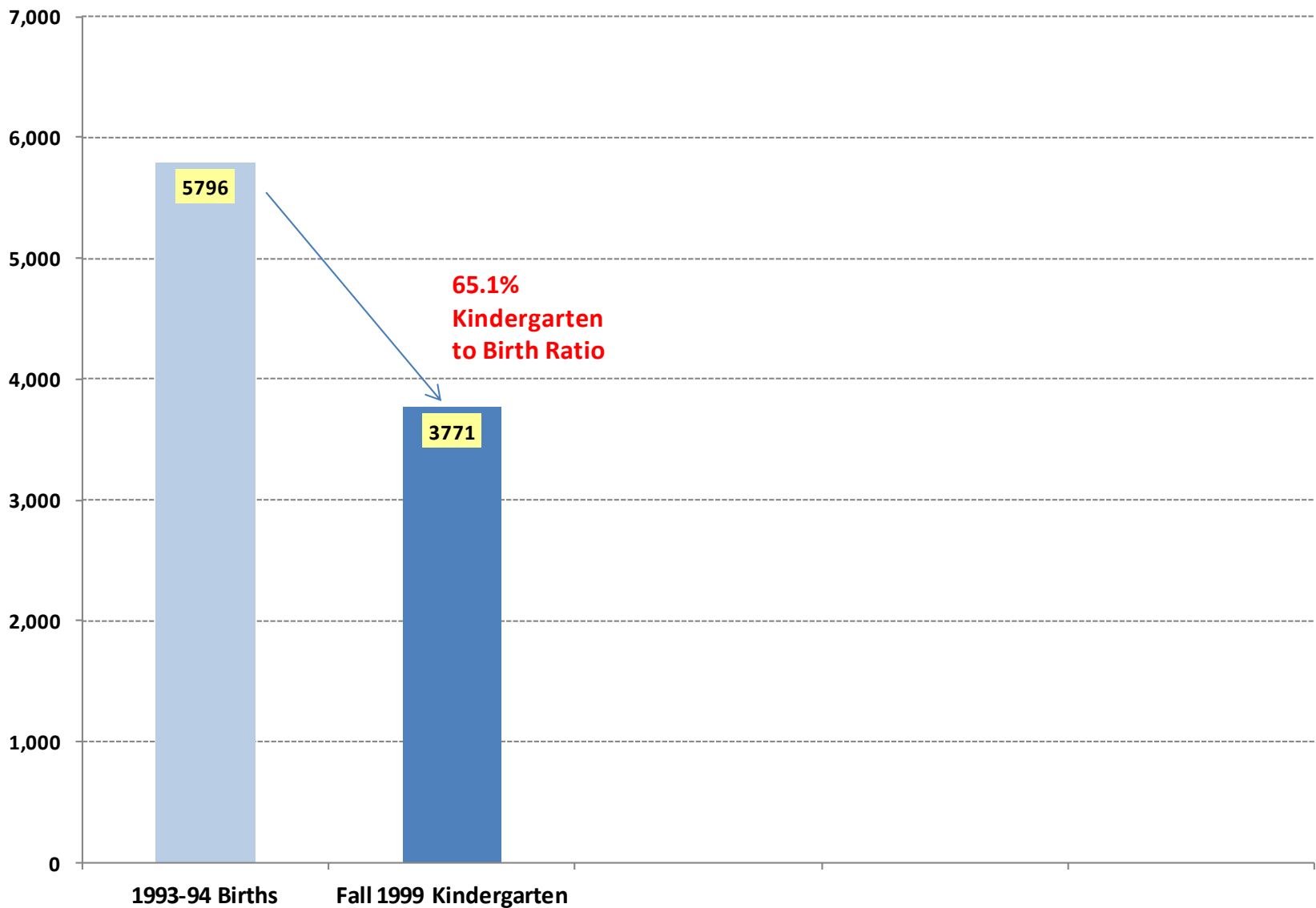
# District-wide K-12 Forecast: Three Scenarios



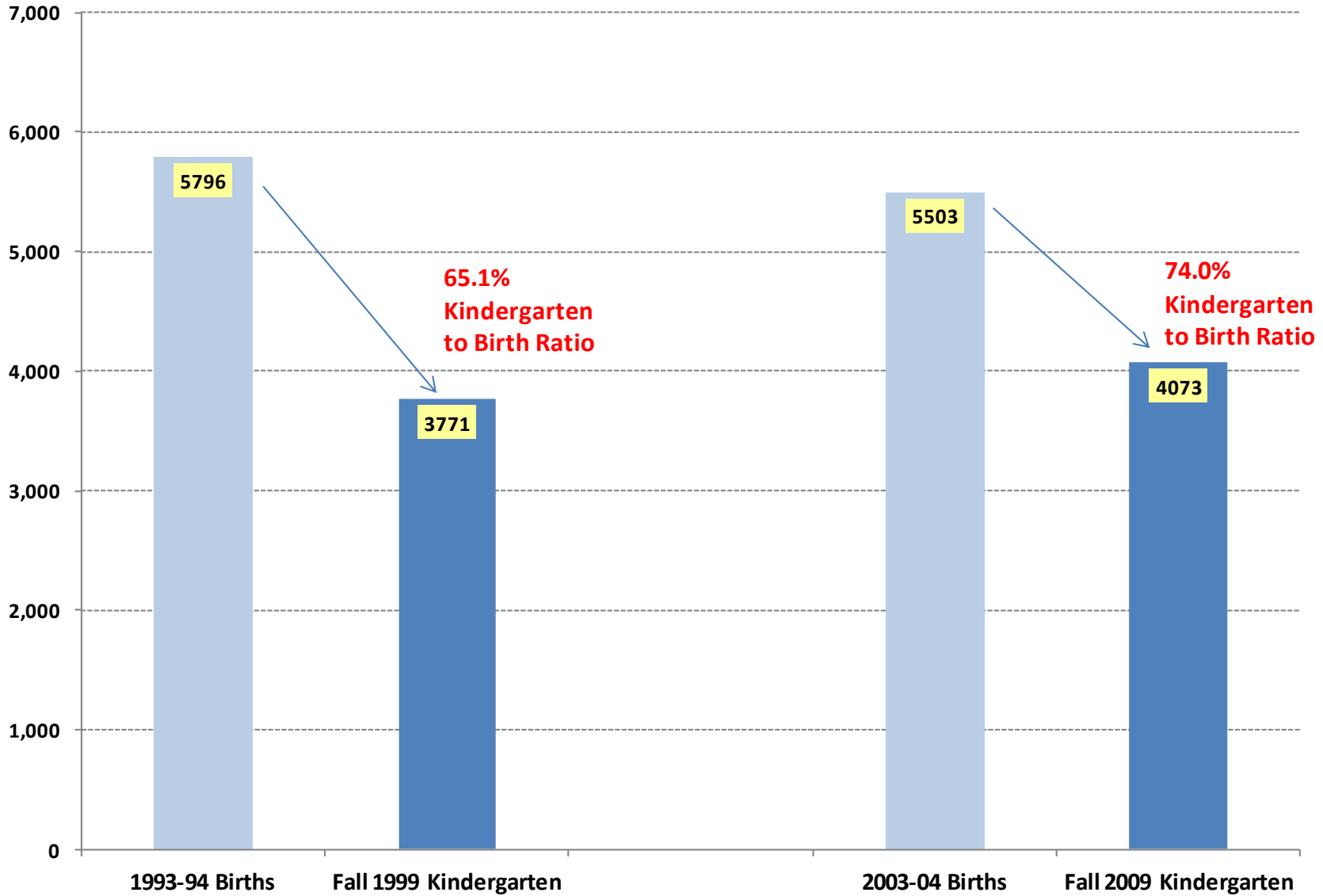
**Chart 3**  
**Ratio of PPS Kindergarten Enrollment to PPS Births**  
**Historic and Medium Growth Scenario Forecast**



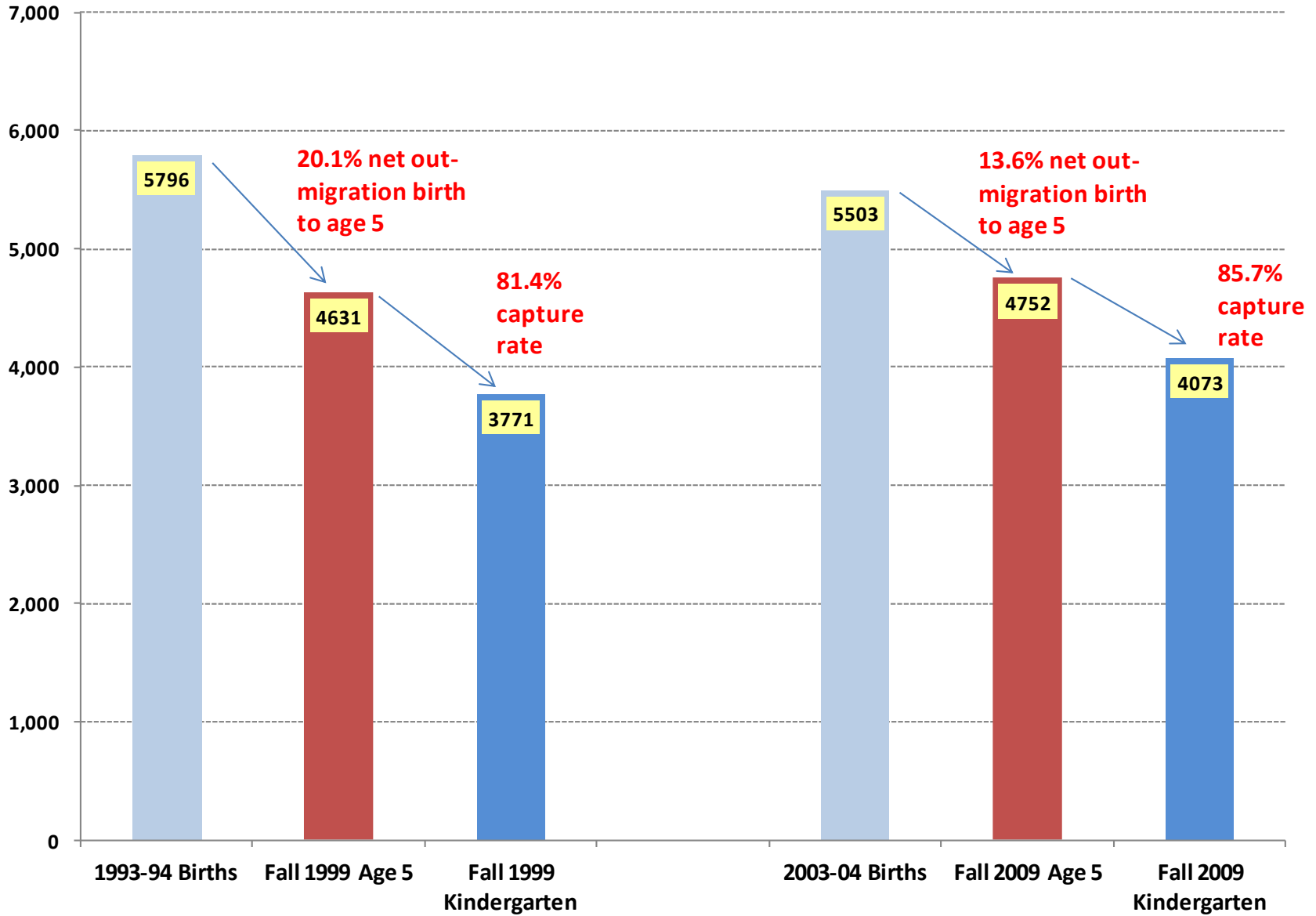
# Estimated Births and Historic Kindergarten Enrollment *Portland Public Schools*



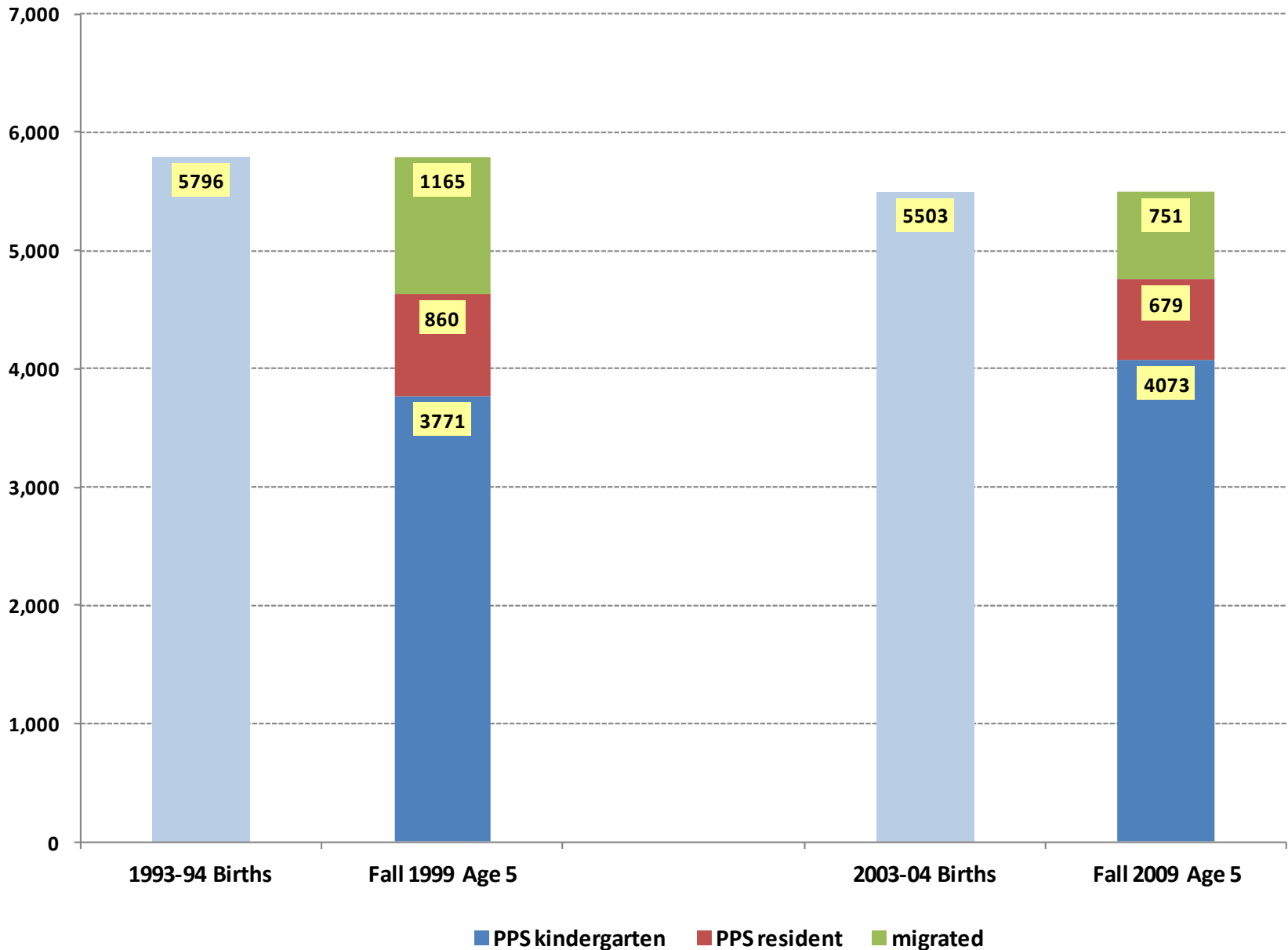
# Estimated Births and Historic Kindergarten Enrollment *Portland Public Schools*



# Estimated Births, Population Age 5, and Historic Kindergarten Enrollment *Portland Public Schools*



# Estimated Births and Population Age 5, and Historic Kindergarten Enrollment *Portland Public Schools*



# Critical Drivers of Enrollment Trends

- Incoming kindergarten
- Migration and mobility
- High school choice (public/private)
- Grade 12: 5<sup>th</sup> year and continuation
- Capture Rates

# Complicating Factors

- New housing (volume and characteristics)
- Perceptions of school quality
- Inter-district transfers
- Charter schools

# Enrollment Trends and Forecasts

**Portland Public Schools  
October 17, 2011**



Charles Rynerson  
Census State Data Center Coordinator  
Population Research Center  
College of Urban and Public Affairs

